



## Brook Road South, TW8

### £800,000

A beautifully designed and immaculately presented three-bedroom family home situated on a quiet residential road.

A large double reception room opens from the hallway and features original floorboards, feature fireplaces and a large window, creating a relaxing living space. The property is bright, spacious and benefits from a modern, recently extended kitchen complete with cloakroom and underfloor heating. Newly fitted sky lights ensure maximum light throughout.

The first floor comprises two bedrooms and family bathroom. The bedrooms have original features, the largest of which has a built-in wardrobe. The second floor is dedicated to the main bedroom with views across rooftops to the nearby St Paul's Park.

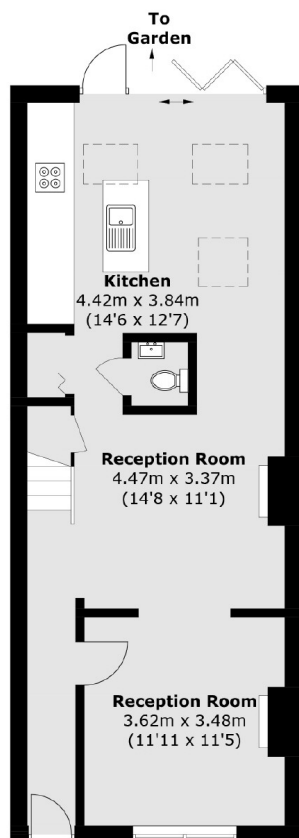
Externally there is a magnificent garden with bi folding doors complete with a shed providing useful outside storage.

The property is conveniently located within a few minutes' walk of Brentford high street and mainline train station. It all adds up to a real "village feel". By car, you are just a couple of minutes' drive from the A4 giving also great access to London.

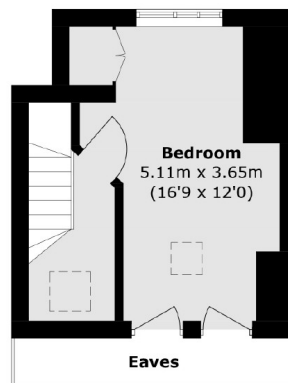
### Features

- Sought after location
- Close to schools
- Private garden
- Extended to rear and loft
- Three double bedrooms
- Freehold

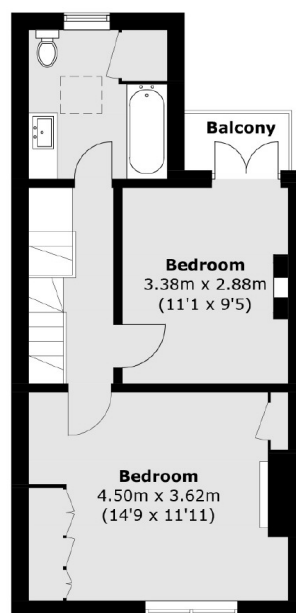
# Brook Road South, Brentford, TW8



**Ground Floor**



**Second Floor**



**First Floor**

Total area (approx.): 116.0 sq. m (1,248.6 sq. ft)  
Balcony area : 1.8 sq. m (19.4 sq. ft)  
(Excluding Eaves)