



## Chiswick High Road, W4

£600 Per week

A two bedroom split-level period apartment in this central area of Chiswick. The property offers great proportions throughout over two floors, has an open plan reception/kitchen with wood flooring and ample built in storage.

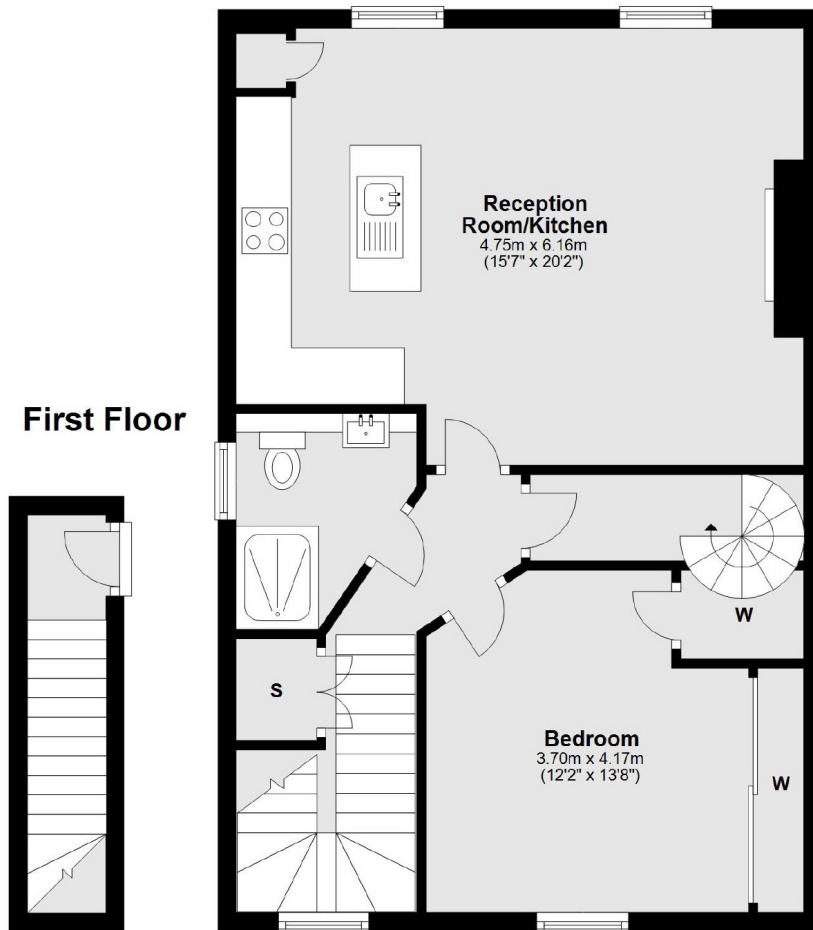
Located on Chiswick High Road within 500 metres of both Gunnersbury and Chiswick Park stations. The property is also very close to the pubs, restaurants and cafés along Chiswick High Road.

### Features

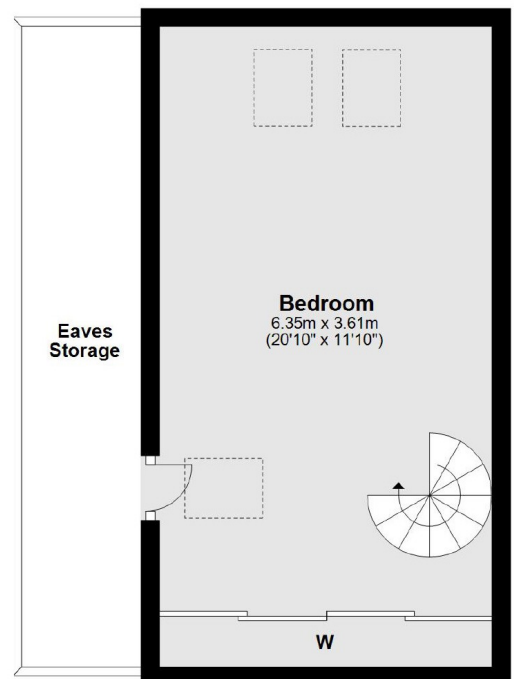
Two Bedrooms  
Period Property  
Split-Level  
Open Plan  
Central Location

Chiswick High Road,  
London, W4

## Second Floor



## Third Floor



Total area: approx. 87.9 sq. metres (946.0 sq. feet)

**Dexters**

Chiswick  
388 Chiswick High Road  
London  
W4 5TF  
Lettings  
020 8995 5439

Energy Rating: E. We aim to make our particulars both accurate and reliable. However they are not guaranteed; nor do they form part of an offer or contract. If you require clarification on any points then please contact us, especially if you're traveling some distance to view. Please note that appliances and heating systems have not been tested and therefore no warranties can be given as to their good working order.

**RICS** | Regulated  
Estate Agent  
and Letting Agent

[dexters.co.uk](http://dexters.co.uk)