



Bollo Lane, W4

£553 Per week

A modern two double bedroom apartment with wood flooring throughout, a semi open plan kitchen, two large bathrooms and a private garden.

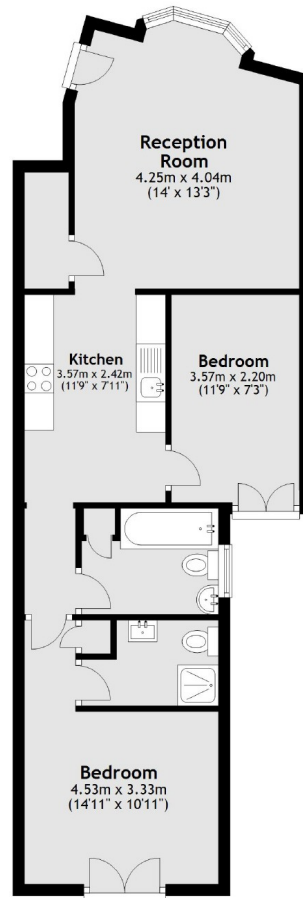
Bollo Lane is well-located for easy access to Chiswick Park tube station and all of the shops, restaurants, bars and pubs along Chiswick High Road.

Features

- Two Bedrooms
- Two Bathrooms
- Private Garden
- Wood Flooring
- Semi Open Plan
- Modern Finish

Bollo Lane, London, W4

Ground Floor



Total area: approx. 56.9 sq. metres (612.6 sq. feet)