



Point Wharf Lane, TW8

£450,000

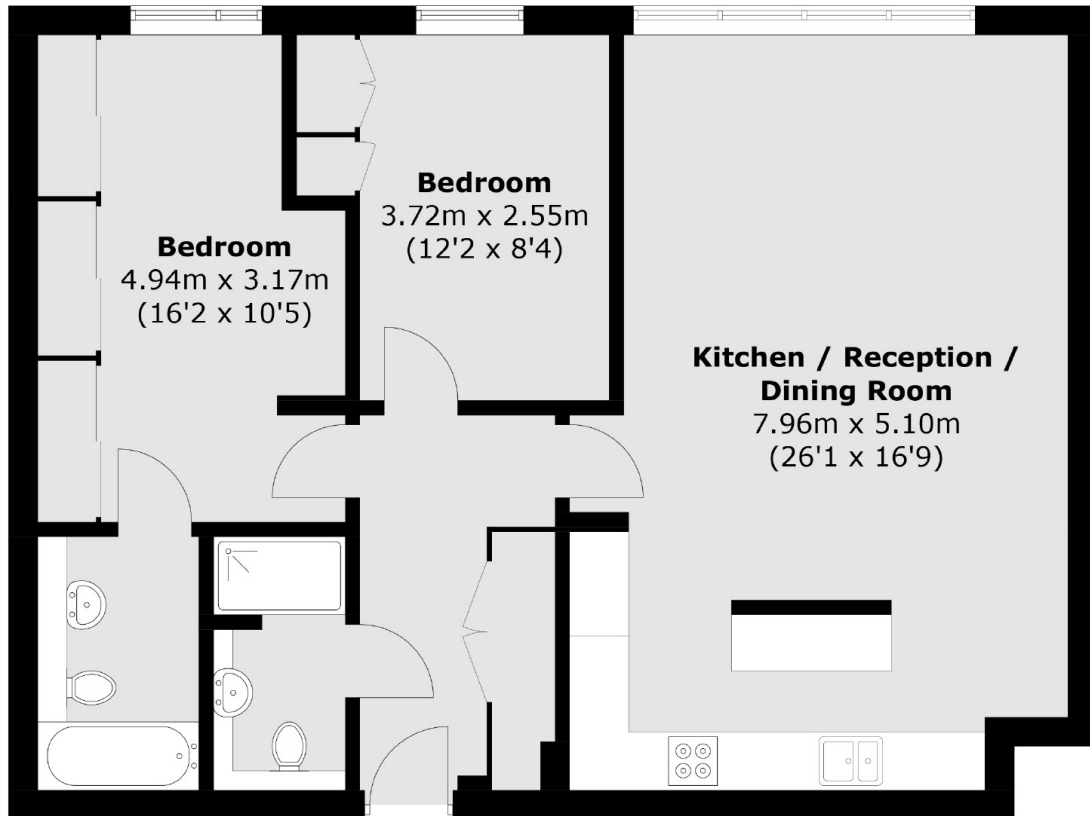
A well presented two bedroom, two bathroom apartment with south-facing river views. With floor to ceiling windows, south-facing private terrace over the river, open-plan living, secure parking and offered with no onward chain.

Situated on the edge of the prestigious Ferry Quays waterside community, Point Wharf Lane is a sought-after riverside development close to Brentford High Street. It is within half a mile from Brentford overground station and a short drive from the M4/A4 providing great access in and out of London.

Features

- Two Double Bedrooms
- Two Bathrooms
- Private Terrace
- Secure Parking
- South Facing River Views
- No Onward Chain

Point Wharf Lane,
Brentford, TW8



Total area (approx.): 81.3 sq. m (875.1 sq. ft)

Dexters

Chiswick
388 Chiswick High Road
London
W4 5TF
Sales
020 8995 4321

Energy Rating: TBC. We aim to make our particulars both accurate and reliable. However they are not guaranteed; nor do they form part of an offer or contract. If you require clarification on any points then please contact us, especially if you're traveling some distance to view. Please note that appliances and heating systems have not been tested and therefore no warranties can be given as to their good working order.

 **RICS** | Regulated
Estate Agent
and Letting Agent

[dexters.co.uk](https://www.dexters.co.uk)