



St. Thomas Road, W4
£900,000

Dexters



St. Thomas Road, W4

A immaculately presented and bright three/four double home within Grove Park. With ample storage, ground floor shower room and side access.

The property has been fully refurbished within the last four years to a high standard, including underfloor heating and external insulation. The Rivers Thames, Chiswick House and the many local shops, cafés and restaurants of Fauconberg Village and Chiswick High Road are a short walk away, as well as the outstanding Grove Park School, Strand on the Green (primary) and Chiswick School (secondary).

St. Thomas Road is conveniently located for access to Chiswick Mainline (London Overground), Gunnersbury Station the A4, M4 and Heathrow airport. There are regular bus links nearby to Chiswick High Road, Chiswick Park and Turnham Green (District Line) station.

Features

Grove Park

Two Bathrooms

Side Access

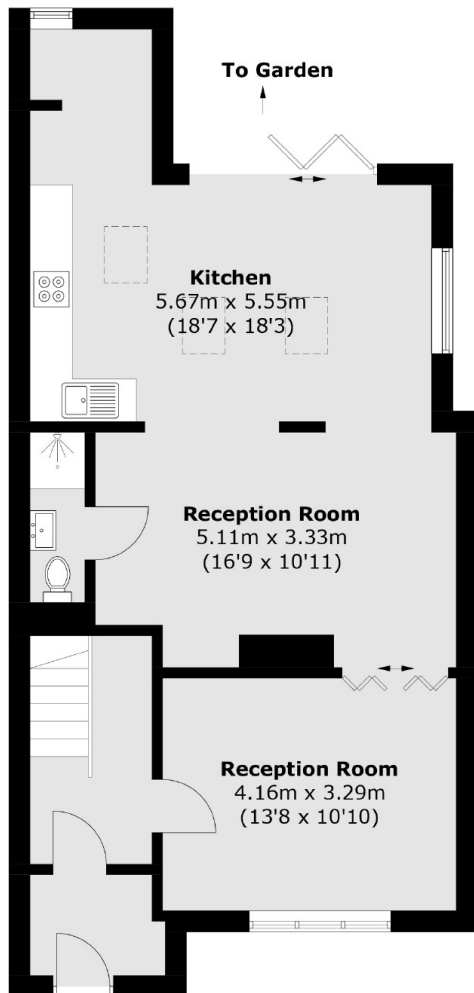
Modern Finish



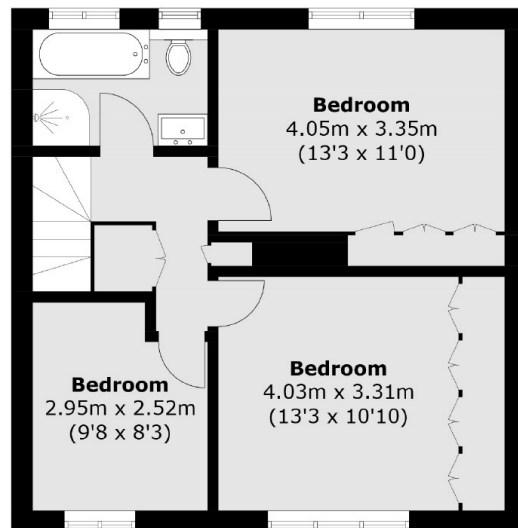




St. Thomas Road,
London, W4



Ground Floor



First Floor

Total area (approx.): 112.1 sq. m (1,206.6 sq. ft)

Dexters

Chiswick
388 Chiswick High Road
London
W4 5TF
Sales
020 8995 4321

Energy Rating: D. We aim to make our particulars both accurate and reliable. However they are not guaranteed; nor do they form part of an offer or contract. If you require clarification on any points then please contact us, especially if you're traveling some distance to view. Please note that appliances and heating systems have not been tested and therefore no warranties can be given as to their good working order.

 **RICS** | Regulated
Estate Agent
and Letting Agent

[dexters.co.uk](https://www.dexters.co.uk)