



Balfern Grove, W4

£1,211 Per week

Dexters



Balfern Grove, W4

A stunning family home with an open plan kitchen/dining room, as well as a double reception with wood flooring, four bedrooms and a private south facing patio garden.

This beautiful family house is full of character and space. It benefits from a south facing garden and plenty of storage.

The ground floor has a spacious eat-in kitchen with double doors leading out to the low maintenance garden, a separate guest WC and a double reception room to the front of the property with original wooden flooring and two beautiful feature fireplaces.

The first floor is comprised of two large double bedrooms, one single bedroom and a large family bathroom. The second floor boasts another large double bedroom, a neighbouring bathroom and benefits from ample storage in the eaves.

Balfern Grove is ideally located for the transport links and amenities of Chiswick High Road as well as access in and out of London via the A4 and the A316.

Features

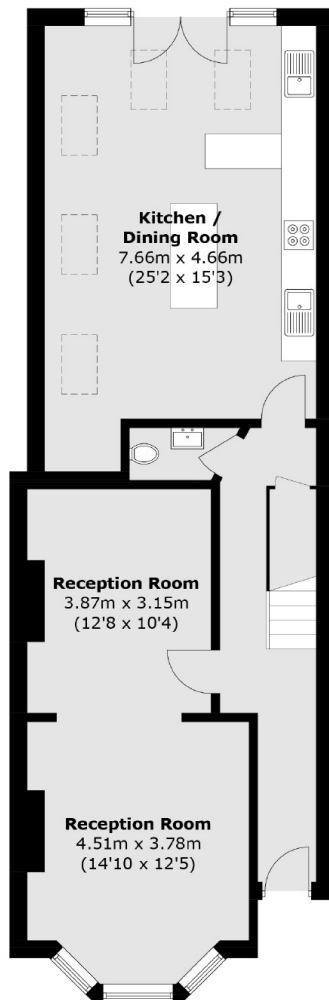
- Four Bedrooms
- Two Bathrooms
- Double Reception
- Open Plan Kitchen
- South Facing Garden
- Central Location



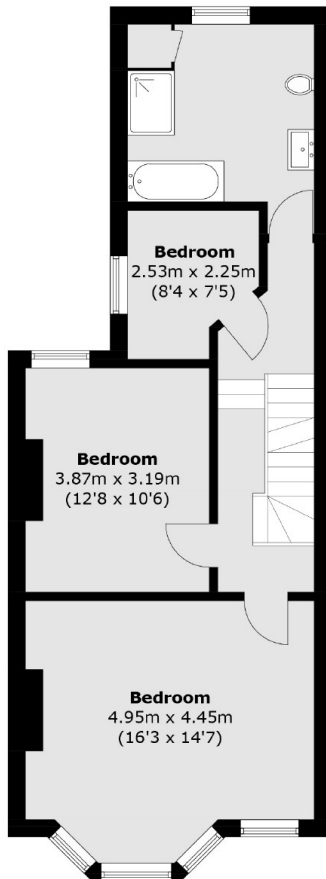




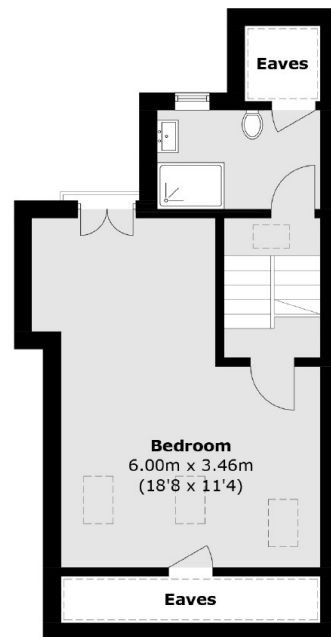
Balfern Grove, London, W4



Ground Floor



First Floor



Second Floor

Total area (approx.): 167.9 sq. m (1,807.2 sq. ft)
(Excluding Eaves)