



Watchfield Court, W4

£600,000

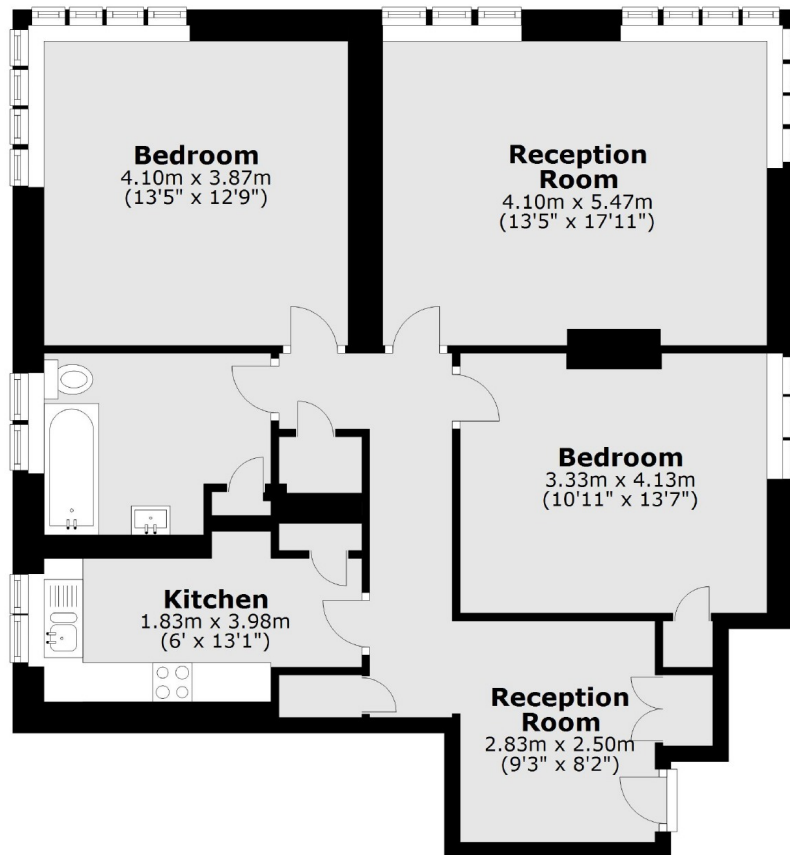
A bright and spacious two/three double bedroom ground floor apartment within this much sought-after development. With private garage, residents parking, well maintained communal garden, no onward chain and heating/hot water included within the service charge.

Watchfield Court is a well-maintained private development with on-site porter. Centrally located in Chiswick with easy access to many amenities along with excellent transport links such as Turnham Green and Chiswick Park Tube Stations, bus links and the A4/M4.

Features

- Ground Floor
- Two Double Bedrooms
- Communal Garden
- Share Of Freehold
- Garage
- No Onward Chain

Watchfield Court, London, W4



Total area: approx. 88.7 sq. metres (954.5 sq. feet)

Dexters

Chiswick
388 Chiswick High Road
London
W4 5TF
Sales
020 8995 4321

Energy Rating: . We aim to make our particulars both accurate and reliable. However they are not guaranteed; nor do they form part of an offer or contract. If you require clarification on any points then please contact us, especially if you're traveling some distance to view. Please note that appliances and heating systems have not been tested and therefore no warranties can be given as to their good working order.

 **RICS** | Regulated
Estate Agent
and Letting Agent

[dexters.co.uk](https://www.dexters.co.uk)