



Chiswick High Road, W4

£600 Per week

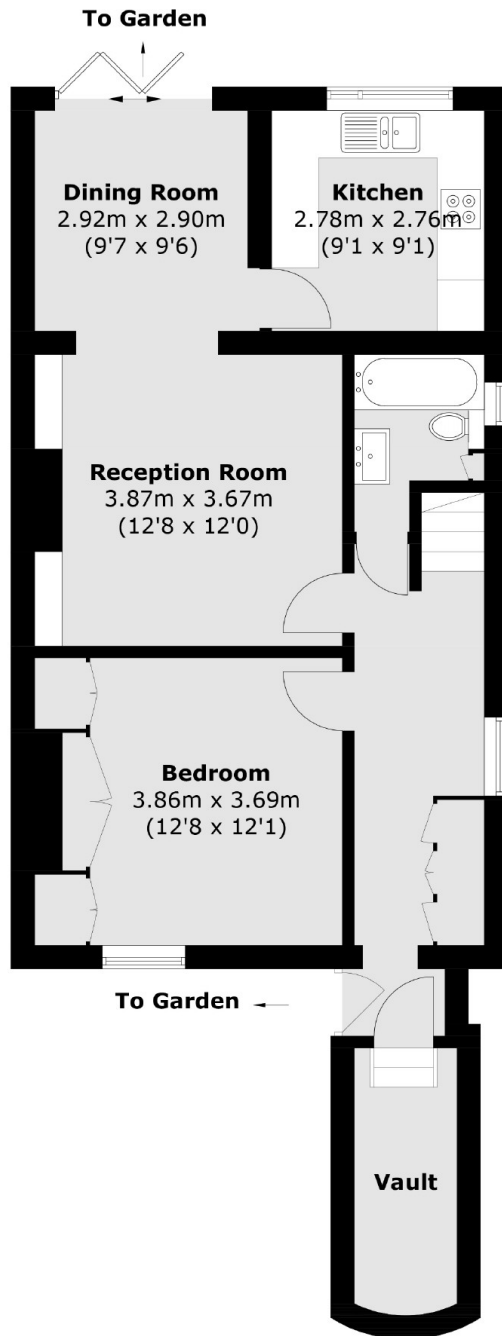
This stunning two bedroom split-level apartment has been finished to a high standard throughout and offers in excess of 800 sq.ft of accommodation, a modern bathroom, a private garden and off-street parking.

Located on Chiswick High Road itself close to the various bars, restaurants and shops and just under half a mile away from Gunnersbury station and Chiswick Business Park.

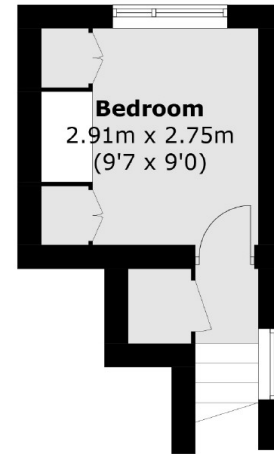
Features

Two Bedroom
Modern Finish Throughout
Split-Level Apartment
In Excess of 800 sq.ft
Private Garden
Off-Street Parking

Chiswick High Road, London, W4



Ground Floor



First Floor

Total area (approx.): 77.0 sq. m (828.8 sq. ft)