



Oxford Road North, W4

£325,000

A well presented ground floor, one bedroom maisonette. The property has been modernised throughout, with allocated off-street parking, long lease, private entrance and offered with no onward chain - perfect as a first-time buy or investment.

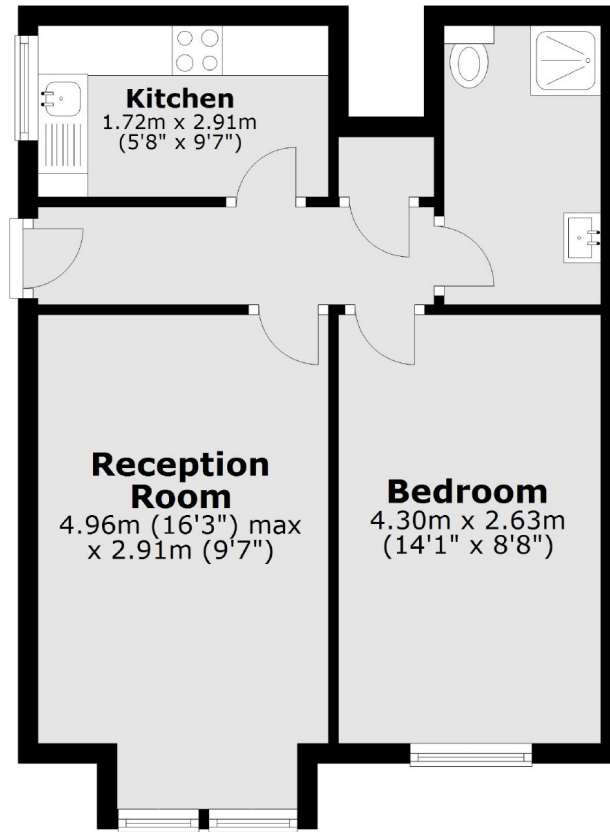
Mitchell House is located off of Chiswick High Road with it's brilliant array of shops, restaurants and cafés to choose from, as well as being serviced by Gunnersbury and Chiswick Park stations. The Thames riverside and Chiswick House and grounds are popular spots nearby.

Features

- Maisonette
- Ground Floor
- Allocated Parking
- Central Location
- Close To Transport
- No Onward Chain

Oxford Road North,
London, W4

Ground Floor



Total area: approx. 40.5 sq. metres (436.0 sq. feet)

Dexters

Chiswick
388 Chiswick High Road
London
W4 5TF
Sales
020 8995 4321

Energy Rating: C. We aim to make our particulars both accurate and reliable. However they are not guaranteed; nor do they form part of an offer or contract. If you require clarification on any points then please contact us, especially if you're traveling some distance to view. Please note that appliances and heating systems have not been tested and therefore no warranties can be given as to their good working order.

 **RICS** | Regulated
Estate Agent
and Letting Agent

[dexters.co.uk](https://www.dexters.co.uk)