

Chiswick High Road, W4

£399,999

A bright and modern one bedroom, purpose-built apartment in this sought-after development. With lift access, open-plan kitchen/reception and offered with no onward chain - perfect as a first time buy or investment.

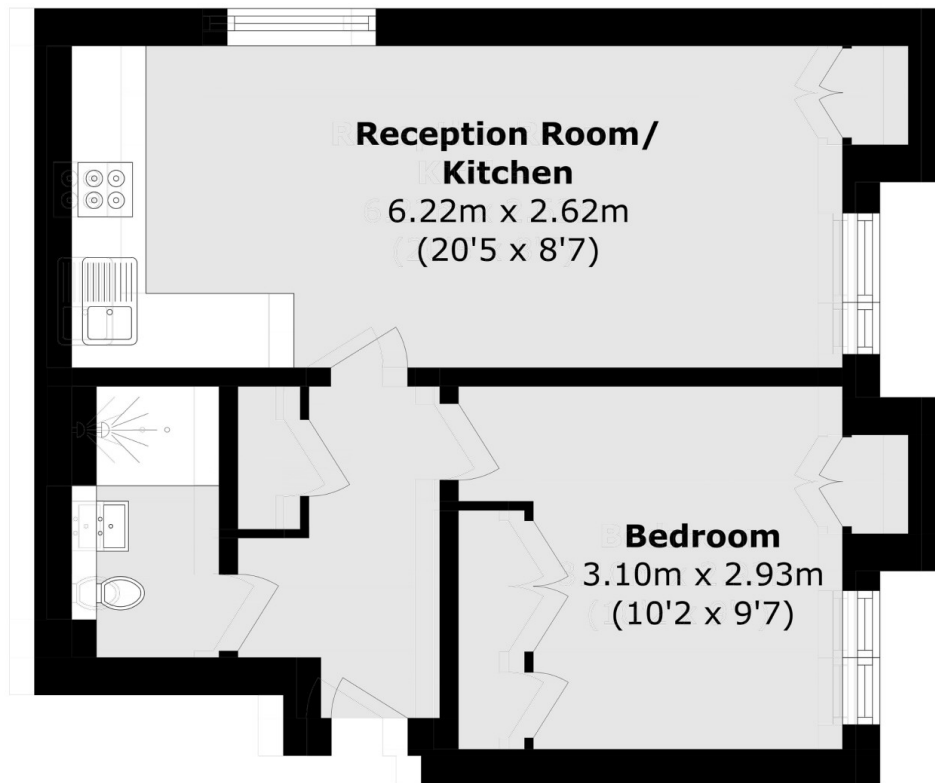
Chiswick High Road offers a brilliant array of shops, restaurants and cafés to choose from, as well as being serviced by Gunnersbury and Chiswick Park stations. The Thames riverside and Chiswick House and grounds are popular spots nearby.

Features

One Double Bedroom
Lift Access
Modern Finish

Close To Amenities
No Onward Chain

Chiswick High Road,
London, W4



Total area (approx.): 34.4 sq.m (370.2 sq. ft)

Dexters

Chiswick
388 Chiswick High Road
London
W4 5TF
Sales
020 8995 4321

Energy Rating: D. We aim to make our particulars both accurate and reliable. However they are not guaranteed; nor do they form part of an offer or contract. If you require clarification on any points then please contact us, especially if you're traveling some distance to view. Please note that appliances and heating systems have not been tested and therefore no warranties can be given as to their good working order.

 **RICS** | Regulated
Estate Agent
and Letting Agent

[dexters.co.uk](https://www.dexters.co.uk)