



Ellesmere Road, W4

£634 Per week

A very spacious four bedroom apartment with over 1,000 sq.ft of living accommodation. This property benefits from four double bedrooms, a large eat in kitchen, bright reception room and three bathrooms.

The property is ideally located for access to Chiswick railway station, Chiswick Park underground station as well as the amenities of Chiswick High Road.

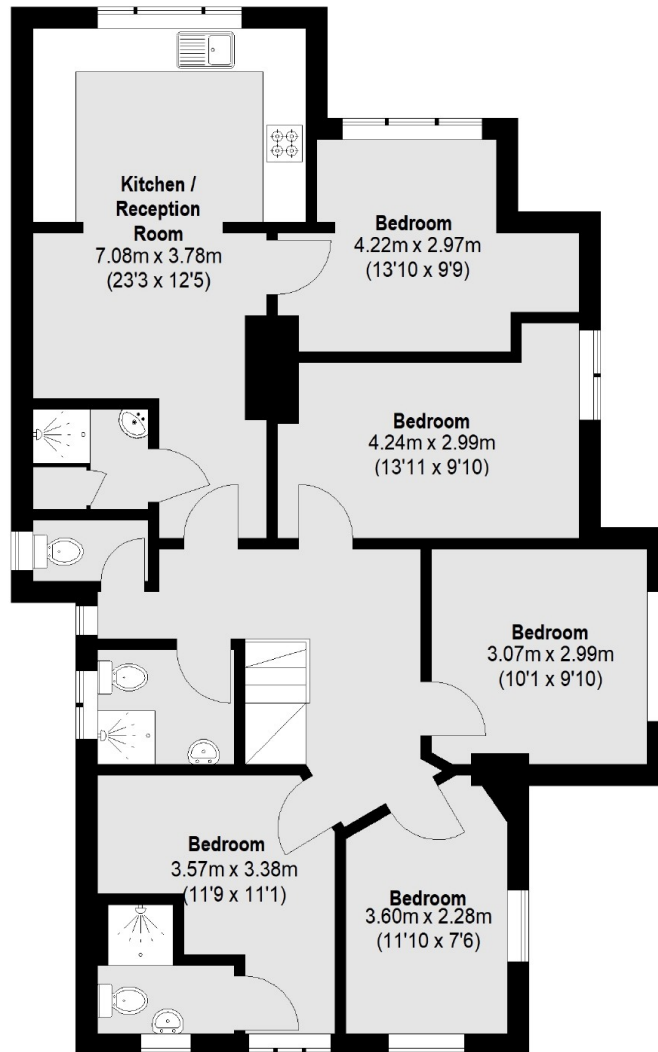
Features

Eat In Kitchen
Four Bedrooms
Three Bathrooms
First Floor
Period Conversion
Central Location

Ellesmere Road,
London, W4



Ground Floor



First Floor

Total area (approx.): 96.18 sq. m (1035 Sq. ft)

Dexters

Chiswick
388 Chiswick High Road
London
W4 5TF
Lettings
020 8995 5439

Energy Rating: D. We aim to make our particulars both accurate and reliable. However they are not guaranteed; nor do they form part of an offer or contract. If you require clarification on any points then please contact us, especially if you're traveling some distance to view. Please note that appliances and heating systems have not been tested and therefore no warranties can be given as to their good working order.

 **RICS** | Regulated
Estate Agent
and Letting Agent

dexters.co.uk