



## Brent Way, TW8

£600,000

An immaculately presented first floor two double bedroom, two bathroom apartment situated within The Brentford Project.

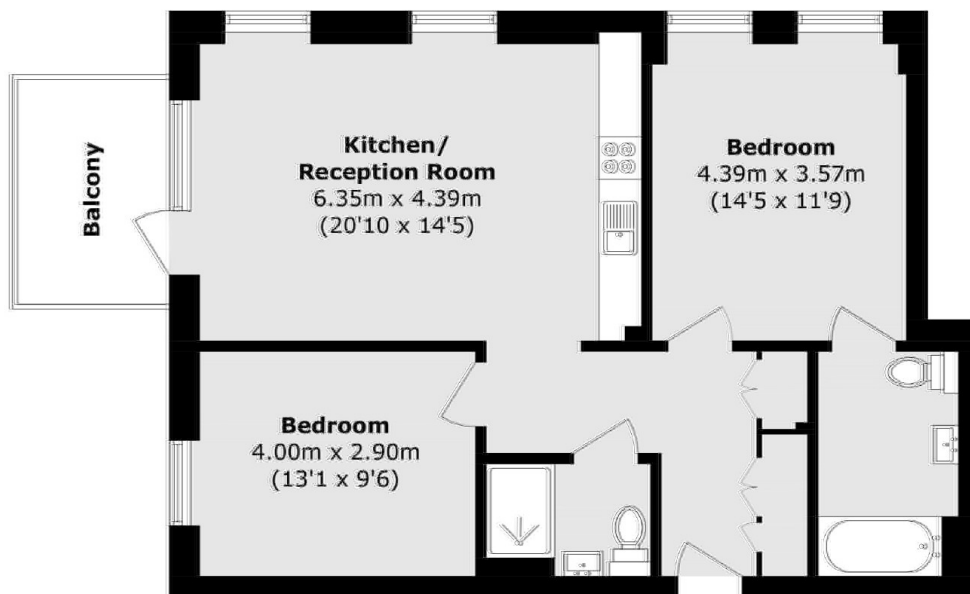
Residents of The Brentford Project benefit from the development's amenities including concierge services, residents lounge, state of the art gym and a beautiful heated open air pool.

Conveniently located to major road links, with the A4, and M4 motorway running through Brentford giving easy access into central London and also out towards Heathrow, and further afield to Reading, Bristol and the West Country.

### Features

- Two Double Bedrooms
- Two Bathrooms
- Allocated Parking Space
- 24 Hour Concierge
- Balcony
- Residents Swimming Pool

# Brent Way, Brentford, TW8



Total area (approx.): 79.2 sq. m (852.5 sq. ft)

Balcony area (approx.): 6.7 sq. m (72.1 sq. ft)

## Dexters

Chiswick  
388 Chiswick High Road  
London  
W4 5TF  
Sales  
020 8995 4321

Energy Rating: B. We aim to make our particulars both accurate and reliable. However they are not guaranteed; nor do they form part of an offer or contract. If you require clarification on any points then please contact us, especially if you're traveling some distance to view. Please note that appliances and heating systems have not been tested and therefore no warranties can be given as to their good working order.

 **RICS** | Regulated  
Estate Agent  
and Letting Agent

[dexters.co.uk](https://www.dexters.co.uk)