



Sutton Lane South, W4
£1,800,000

Dexters



Sutton Lane South, W4

At in excess of 2,700 sq/ft, a substantial semi-detached four bedroom home in Grove Park that has been finished to a high standard. With gated off-street parking, south-facing garden and no onward chain.

Upon entry you are welcomed by the expansive reception and kitchen/dining room leading onto the south-facing garden. There is also off-street parking for multiple cars.

The grand staircase leads to a further reception room/bedroom that encompasses half of the first floor and two bedrooms, both of which have en-suite bathrooms.

To the second floor there is the principle suite with a further bathroom and room that than can be used as an office or dressing room.

Sutton Lane South is located within the sought-after area of Grove Park and is also under a mile from Gunnersbury Station (District line), Chiswick mainline station and the many bars, cafés and restaurants of Chiswick High Road.

Features

- Semi-Detached
- Four Bedrooms
- Grove Park
- South-Facing Garden
- Gated Off-Street Parking
- No Onward Chain

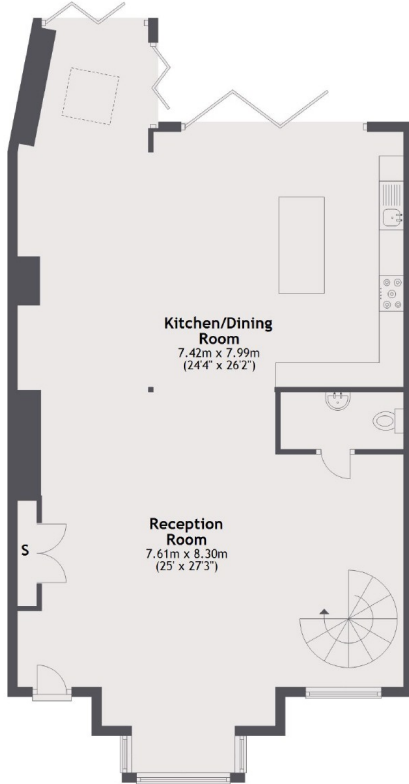




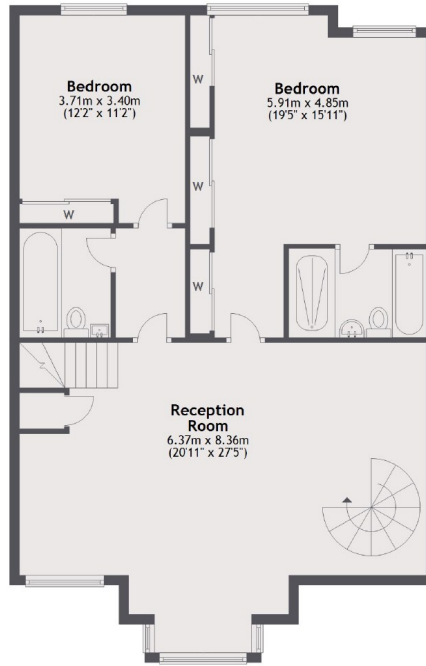


Sutton Lane South, London, W4

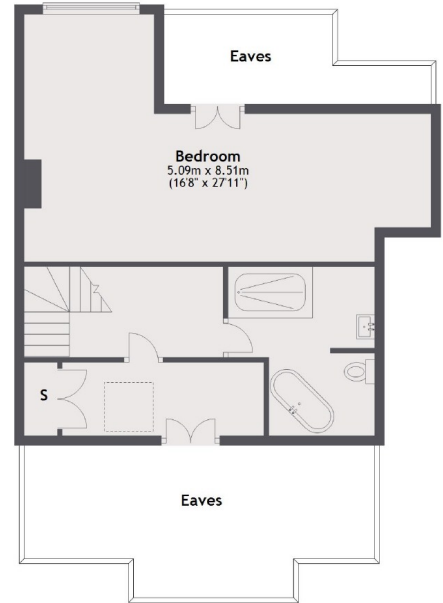
Ground Floor



First Floor



Second Floor



Total area: approx. 255.9 sq. metres (2755.0 sq. feet)