



Sutton Lane South, W4

£1,557 Per week

A four bedroom house in Grove Park that has been finished to the highest standard with over 2,700 sq.ft of space, two reception rooms and off-street parking.

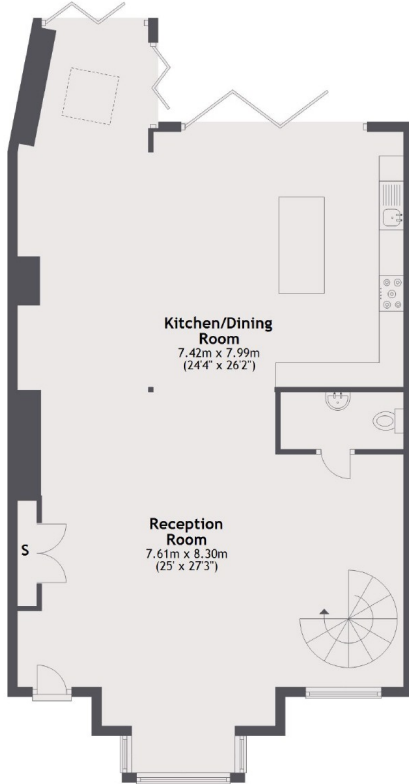
Located within the sought after area of Grove Park and is also under a mile from Gunnersbury station, Chiswick mainline station and the amenities on Chiswick High Road.

Features

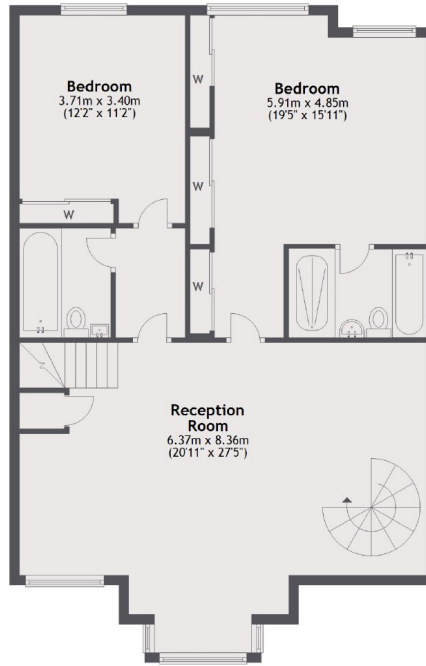
- Four Bedrooms
- Three Bathrooms
- Open Plan Living
- High Specification
- Grove Park
- Off Street Parking

Sutton Lane South, London, W4

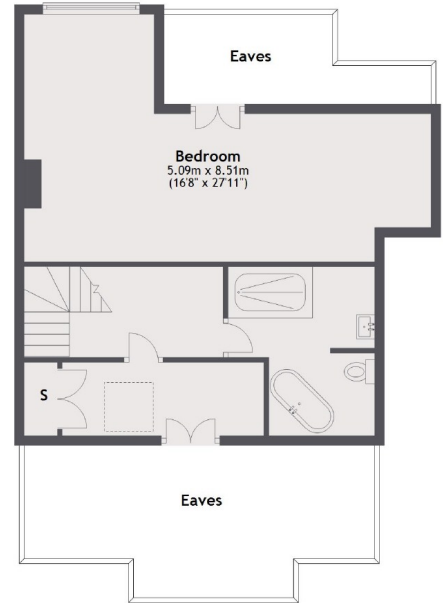
Ground Floor



First Floor



Second Floor



Total area: approx. 255.9 sq. metres (2755.0 sq. feet)