



## Linden Gardens, W4

£600,000

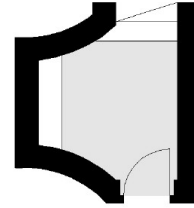
An ideally located and modern two double bedroom, split-level conversion flat. With share of freehold, ample storage and no onward chain.

Linden Gardens is situated in the highly sought after Glebe estate moments from Chiswick High Road with its shops, bars, cafes boutique shops and excellent transport links. Turnham Green Station is a short walk away and is the nearest underground station.

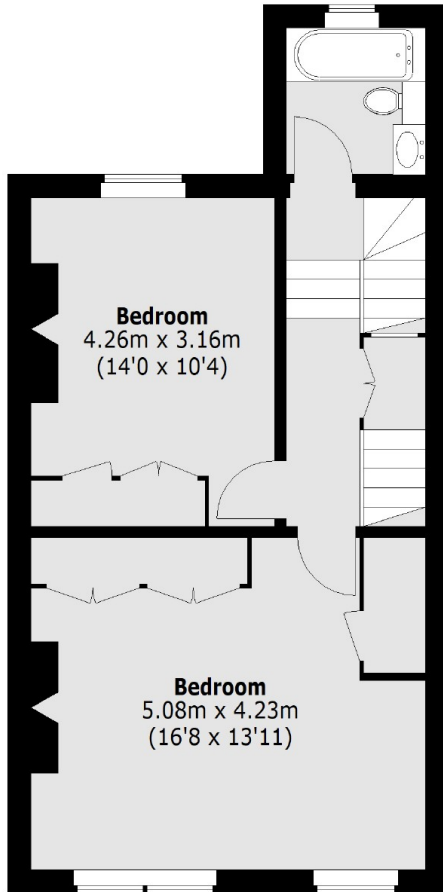
### Features

931 Sq/Ft  
Two Double Bedrooms  
Split-Level Conversion  
Share Of Freehold  
Central Location  
No Onward Chain

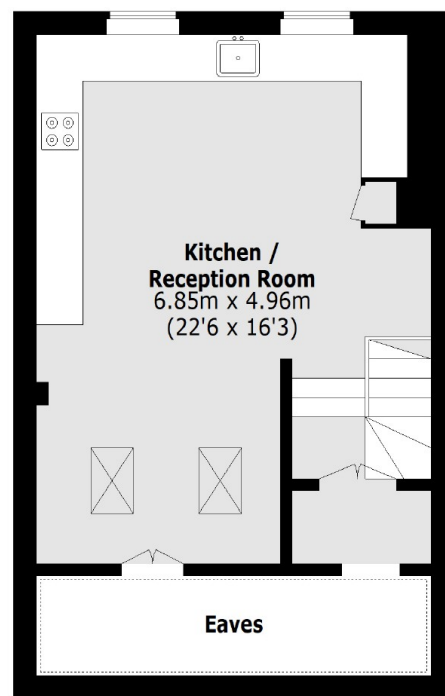
# Linden Gardens, London, W4



**Ground Floor**



**First Floor**



**Second Floor**

Total area (approx.): 86.5 sq. m (931.1 sq. ft)  
(Excluding Eaves)