



## Tallow Road, TW8

£975,000

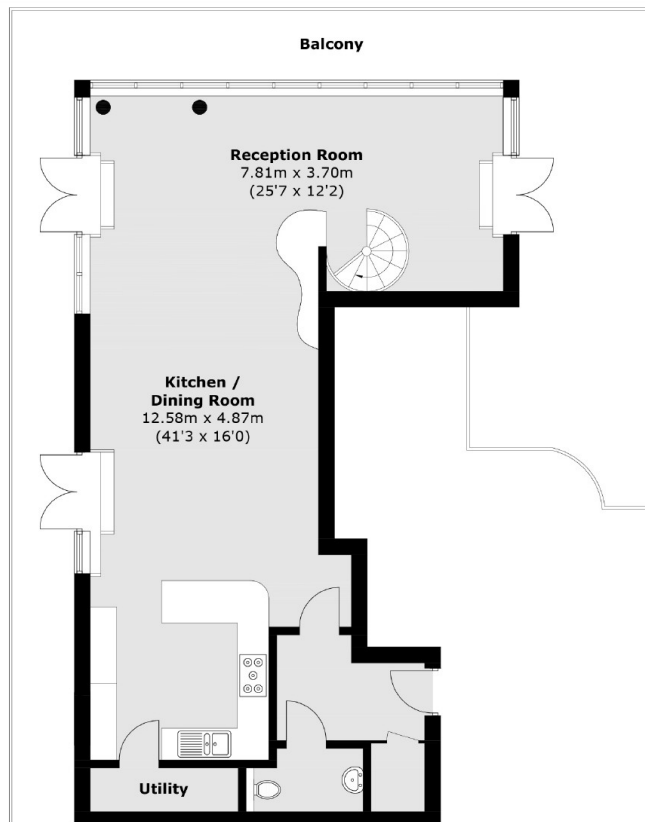
A substantial split-level penthouse apartment situated on the award-winning 'The Island' at Brentford Lock. The development is gated and river facing with allocated underground parking, lift access, concierge service and no onward chain.

Situated moments away from the High Street which offers a range of local shops, bars and restaurants, Brentford Mainline Station which provides a regular service into London Waterloo, M3/M4/M25 motorway links are also close to hand.

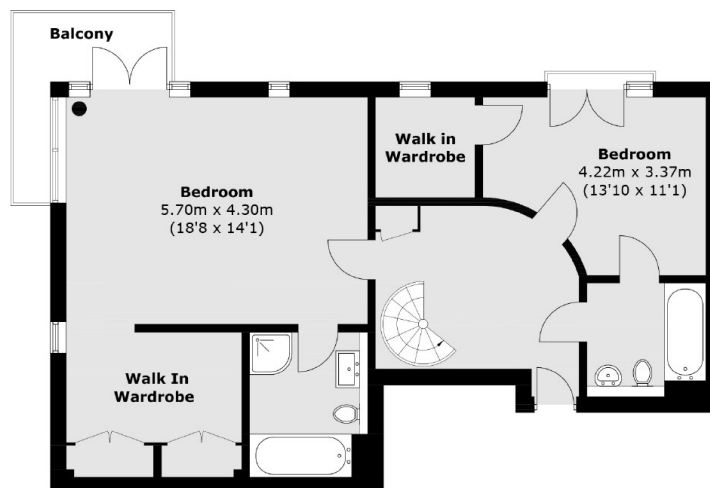
### Features

- Gated Development
- Two Double Bedrooms
- Two Bathrooms
- River Views
- Allocated Parking
- No Onward Chain

# Tallow Road, Brentford, TW8



**First Floor**



**Ground Floor**

Total area (approx.): 155.5 sq. m (1673.8 sq. ft)  
Balcony: 59.5 sq. m (640.4 sq. ft)