



Sutton Court, W4

£650,000

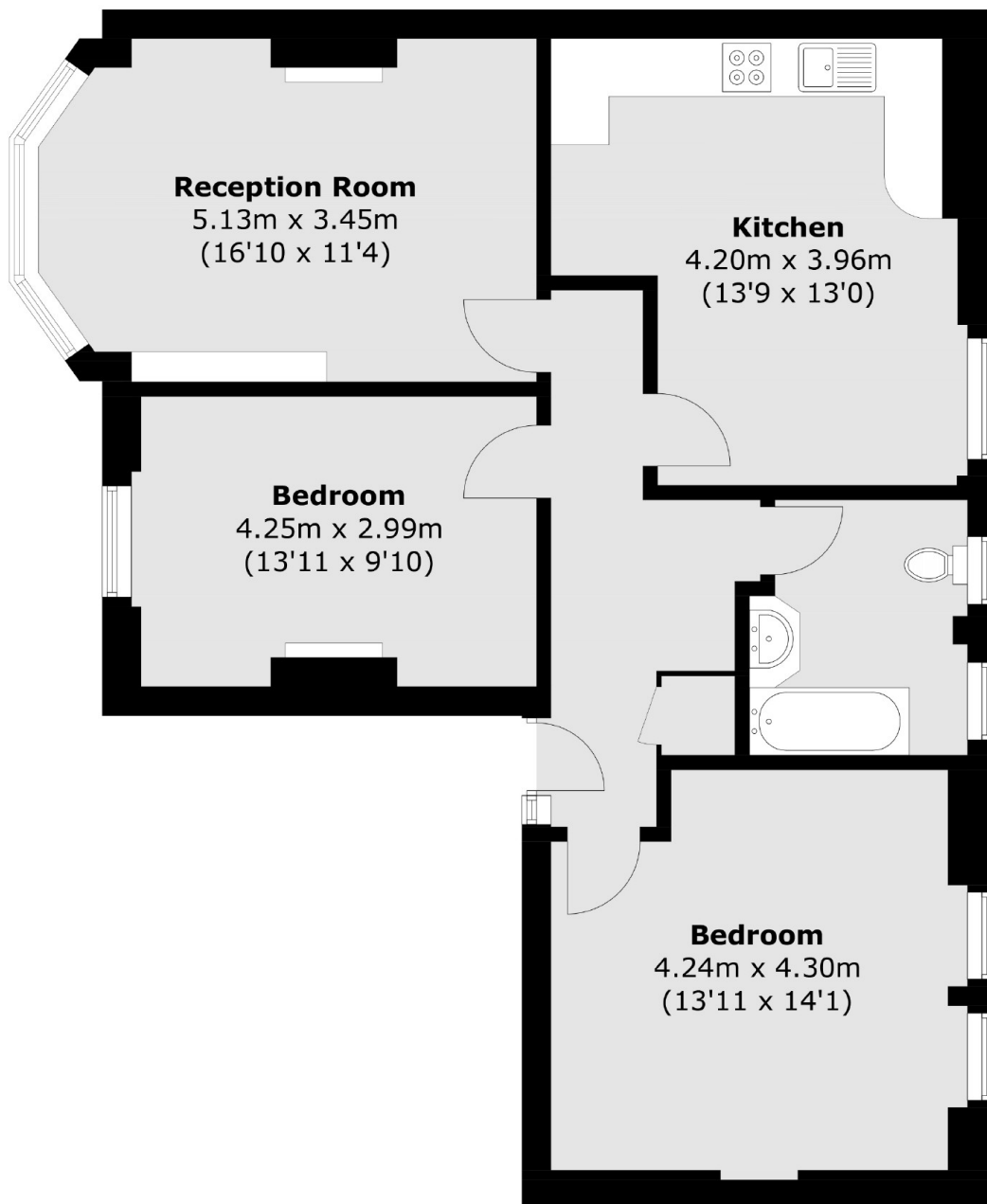
Offers in excess of A recently modernised ground floor, two double bedroom apartment within this popular mansion block. With large separate kitchen, manicured communal gardens, long lease and no onward chain.

Sutton Court is located close to the grounds of Chiswick Park and the local shops, bars and restaurants of Fauconberg Village. Chiswick overground station is within walking distance, local bus routes also run directly in front of the development to Turnham Green station.

Features

Ground Floor
Two Double Bedrooms
Recently Modernised
Mansion Block
Communal Gardens
No Onward Chain

Sutton Court, London, W4



Total area (approx.): 81.9 sq. m (881.6 sq. ft)