



Augustus Close, TW8

£500,000

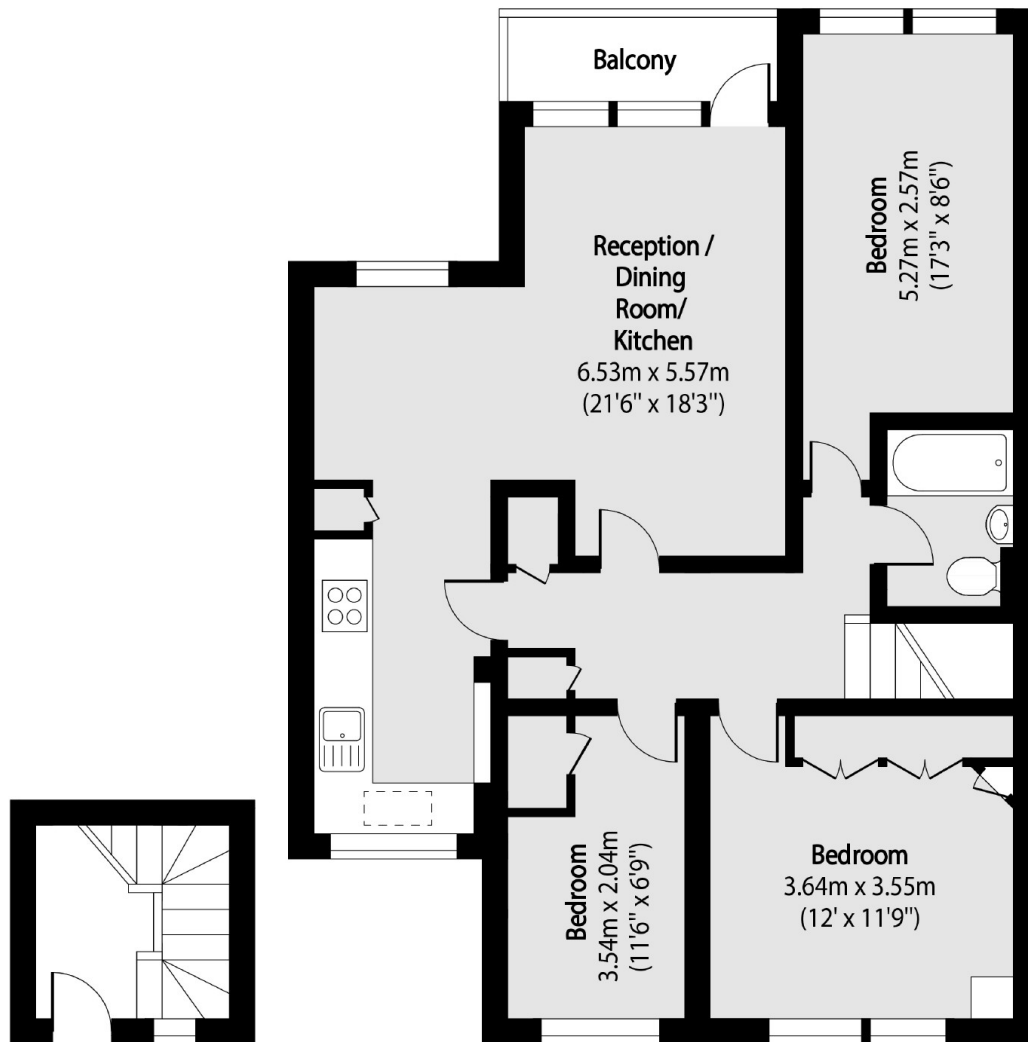
A well presented, 927 sq/ft three bedroom, top floor split-level apartment within this sought-after riverside development. With share of freehold with heating and hot water included within the service charge, lift access, private garage, external storage unit, residents gated communal gardens and access to the river. The development also has an on site convenience shop and 24 hour security.

Brentford Dock, located on the banks of the River Thames, is within walking distance of Brentford High Street, Brentford overground station and a short drive from the M4/A4 providing great access in and out of London.

Features

- Maisonette
- Three Double Bedrooms
- Balcony
- Private Garage
- External Storage
- Share Of Freehold

Augustus Close, Brentford, TW8



Third Floor

Fourth Floor

Total area (approx): 86.21 sq m (927 sq. ft)

Balcony total area (approx): 3.20 sq m (34 sq. ft)