



Station Gardens, W4

£807 Per week

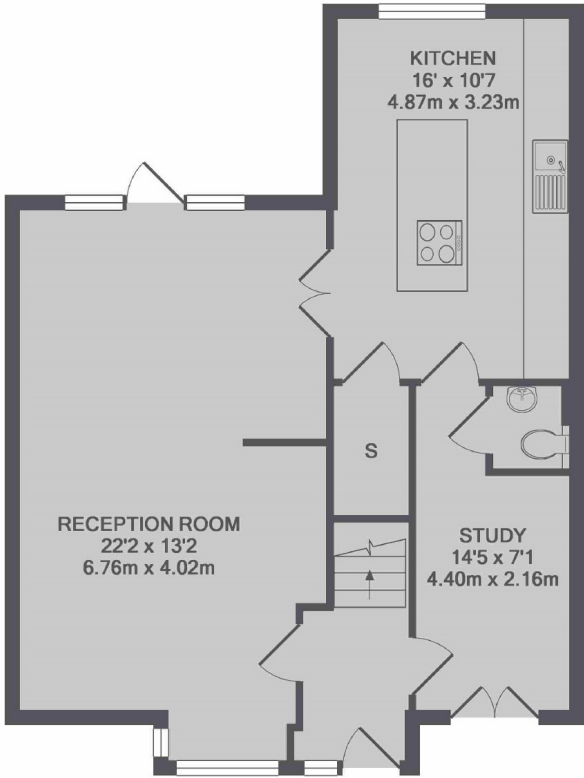
A fully refurbished three bedroom end of terrace house with a large reception room, a separate kitchen, two bathrooms, a private drive way and a large private garden.

Station Gardens is in the heart of Grove Park offering easy access to the A316, A4, Chiswick House and Grounds and Chiswick mainline train station.

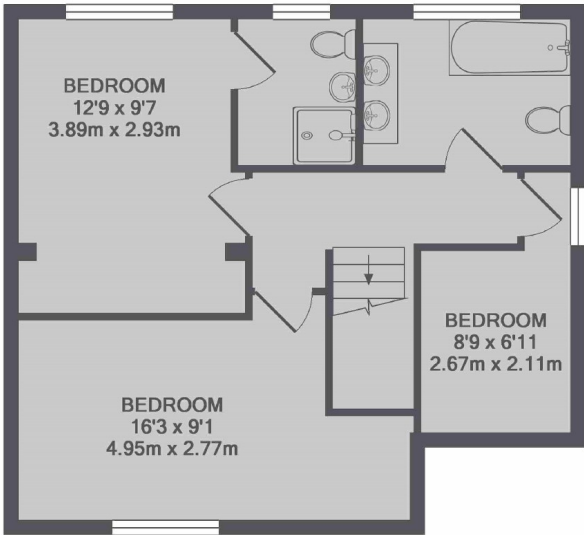
Features

- Three Bedrooms
- Two Bathrooms
- Fully Refurbished
- Off-Street Parking
- Private Garden
- Modern Kitchen

Station Gardens,
London, W4



GROUND FLOOR



1ST FLOOR

TOTAL APPROX. FLOOR AREA 1166 SQ.FT. (108.3 SQ.M.)

Dexters

Chiswick
388 Chiswick High Road
London
W4 5TF
Lettings
020 8995 5439

Energy Rating: C. We aim to make our particulars both accurate and reliable. However they are not guaranteed; nor do they form part of an offer or contract. If you require clarification on any points then please contact us, especially if you're traveling some distance to view. Please note that appliances and heating systems have not been tested and therefore no warranties can be given as to their good working order.

 **RICS** | Regulated
Estate Agent
and Letting Agent

[dexters.co.uk](https://www.dexters.co.uk)