



Balfern Grove, W4

£1,450,000

A well-presented and extended four bedroom Victorian home on this popular residential street. Within a short walk of Chiswick High Road and the river, the property is also offered without an onward chain.

Situated within walking distance of Chiswick High Road, with its extensive array of shops, bars, cafés and restaurants. Transport links include Turnham Green and Stamford Brook tube stations as well as local bus routes.

Features

- Victorian Home
- Four Double Bedrooms
- Two Bathrooms
- Eat-In Kitchen
- Close To Amenities
- No Onward Chain



Balfern Grove, W4

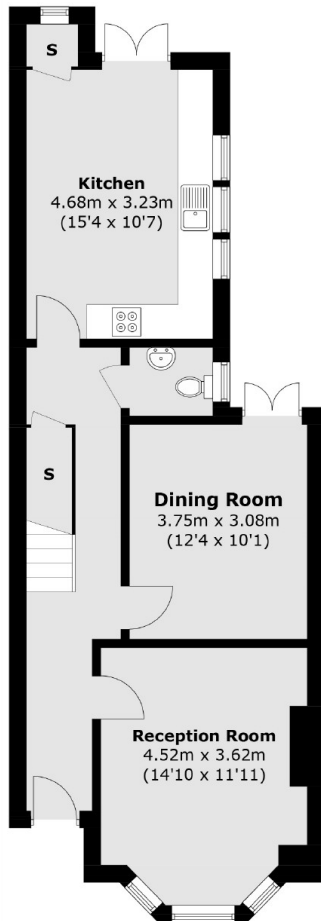
Arranged over three floors, the ground floor has the front separate reception and dining rooms with doors leading onto the garden and the large eat-in kitchen, also leading onto the garden as well as the guest WC. There is potential to extend into the side return too, subject to the usual planning consents.

The first floor provides three double bedrooms, the largest of which has a striking bay window, and the family bathroom.

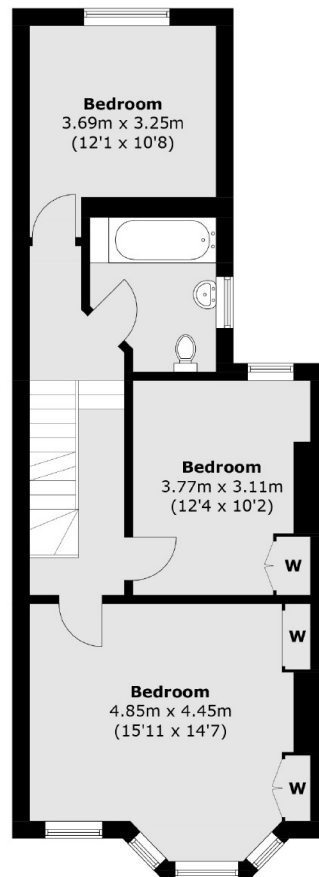
To the top floor, the principle suite has a huge amount of storage within the eaves and the en-suite shower room.



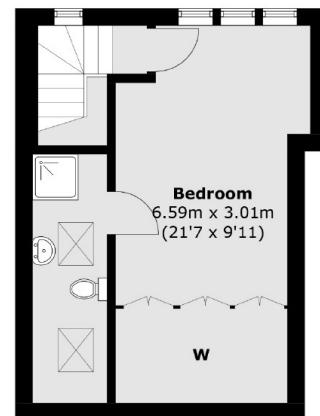
Balfern Grove, London, W4



Ground Floor



First Floor



Second Floor

Total area (approx.): 148.2 sq. m (1,595.2 sq. ft)