



## Chiswick Village, W4

£550,000

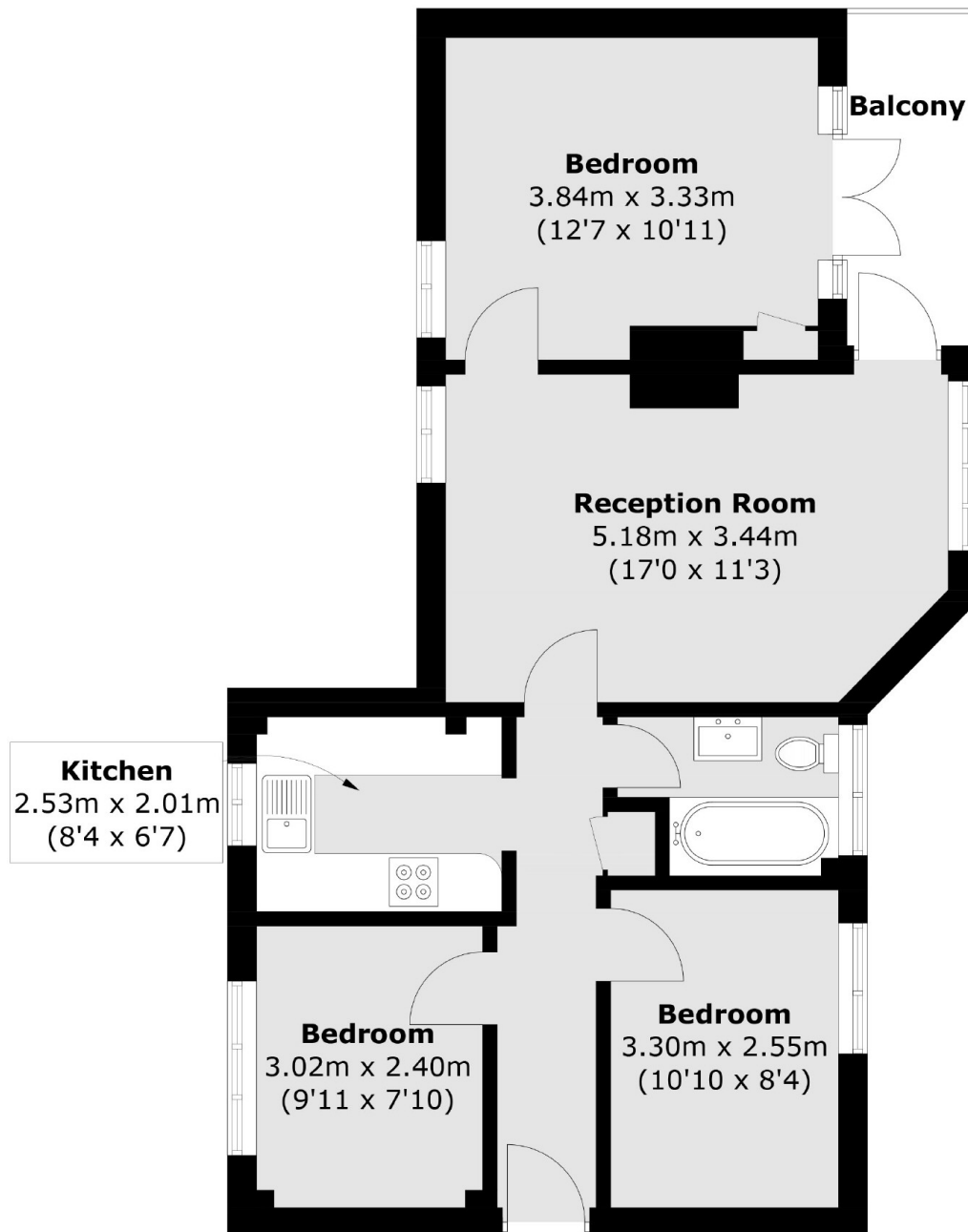
A bright and well-presented three bedroom, fourth floor apartment within this popular residential development. With private balcony, lift access, share of freehold and offered with no onward chain.

Chiswick Village is within half a mile of Gunnersbury Station (District & Overground), Kew Bridge Station (GWR) and the M4/A4 providing excellent access into and out of London. Highly regarded schools such as Strand on the Green, local amenities, restaurants and the River Thames are also close by.

### Features

- Three Bedrooms
- Fourth Floor
- Private Balcony
- Lift Access
- Share Of Freehold
- No Onward Chain

# Chiswick Village, London, W4



Total area (approx.): 61.8 sq. m (665.2 sq. ft)  
Balcony area: 4.4 sq. m (47.3 sq. ft)