



Short Road, W4

£507 Per week

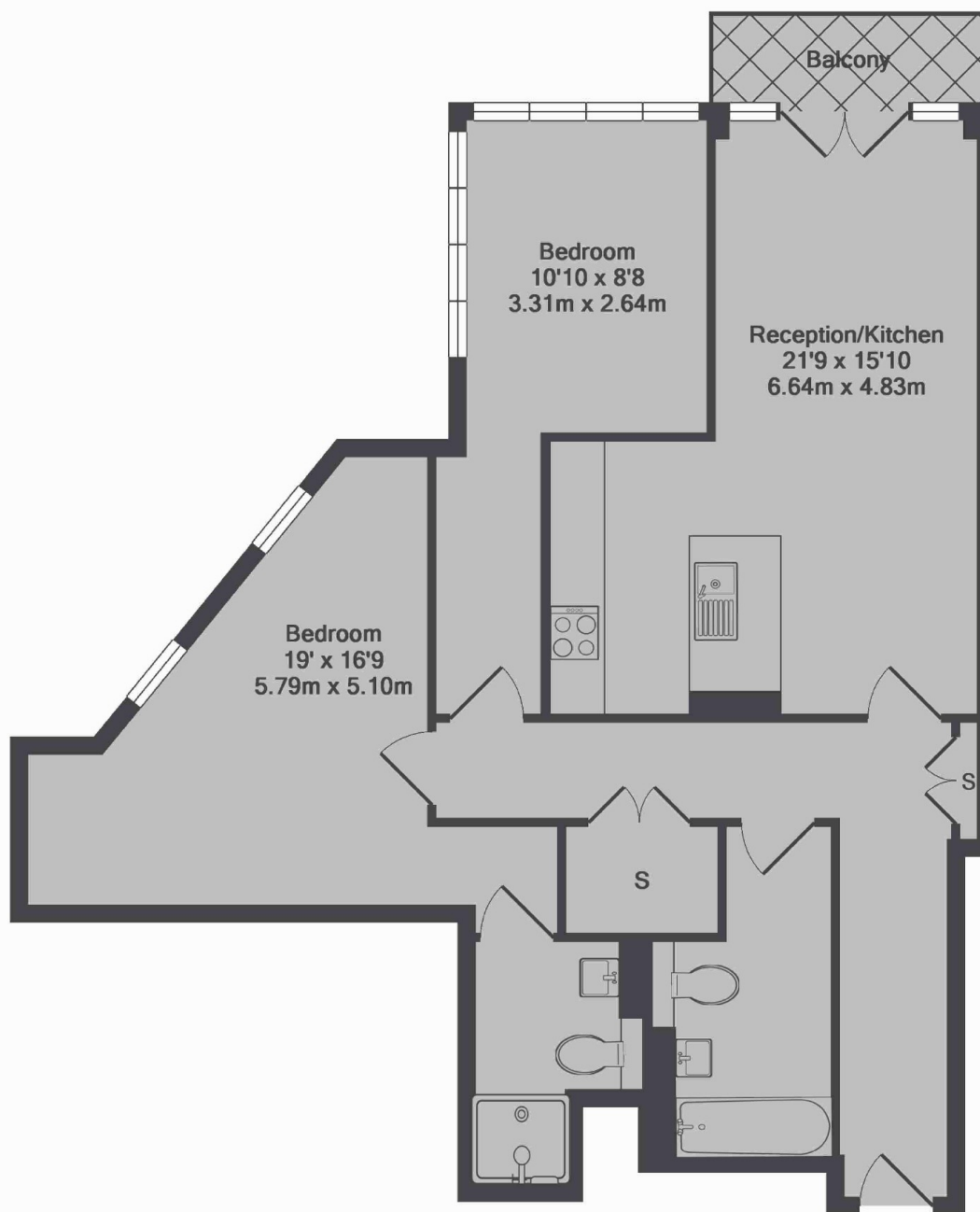
A two double bedroom first floor apartment with a high specification finish. The property has a contemporary open plan kitchen/living area, two stylish bathrooms and allocated parking.

Short Road is in an excellent position for quick access into Central London, within easy reach of both Chiswick Station and Turnham Green tube station.

Features

- New Build
- Two Bedrooms
- Two Bathrooms
- Open Plan
- Allocated Parking
- Transport Links

Short Road, London, W4



Linen House, W4
Total Approx. Floor Area 893 Sq.Ft. (82.9 Sq.M.)