



## Somerset Road, W4

£1,038 Per week

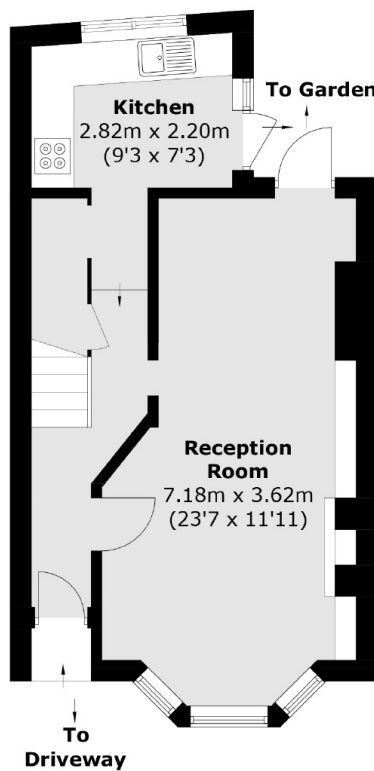
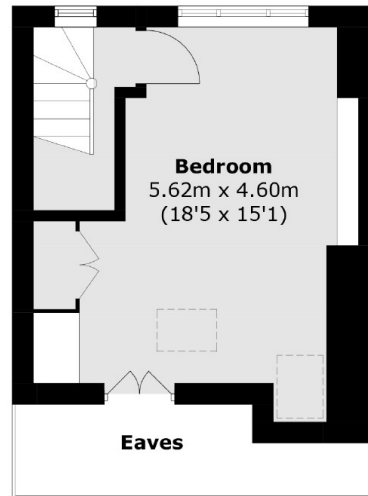
A Three bedroom period house that offers a contemporary mix of period features and modern fittings. The house benefits from local amenities, transport and green spaces being close by making it a great family home.

Somerset Road is located within half a mile of Chiswick Park (District) and South Acton (Overground) underground stations. The property is also close to local amenities and bus links on Acton Lane and Chiswick High Road. Local schools and green spaces are also close by.

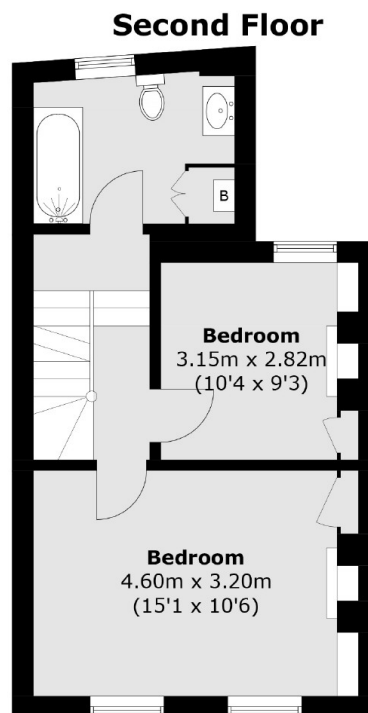
### Features

- Period Features
- Close To Transport/Amenities
- Arranged Over 3 Floors
- Double Reception Room
- Modern Kitchen
- Three Bedrooms

# Somerset Road, London, W4



**Ground Floor**



**First Floor**

Total area (approx.): 97.2 sq. m (1,046.2 sq. ft)  
(Excluding Eaves)