



Albany Court, W4

£640,000

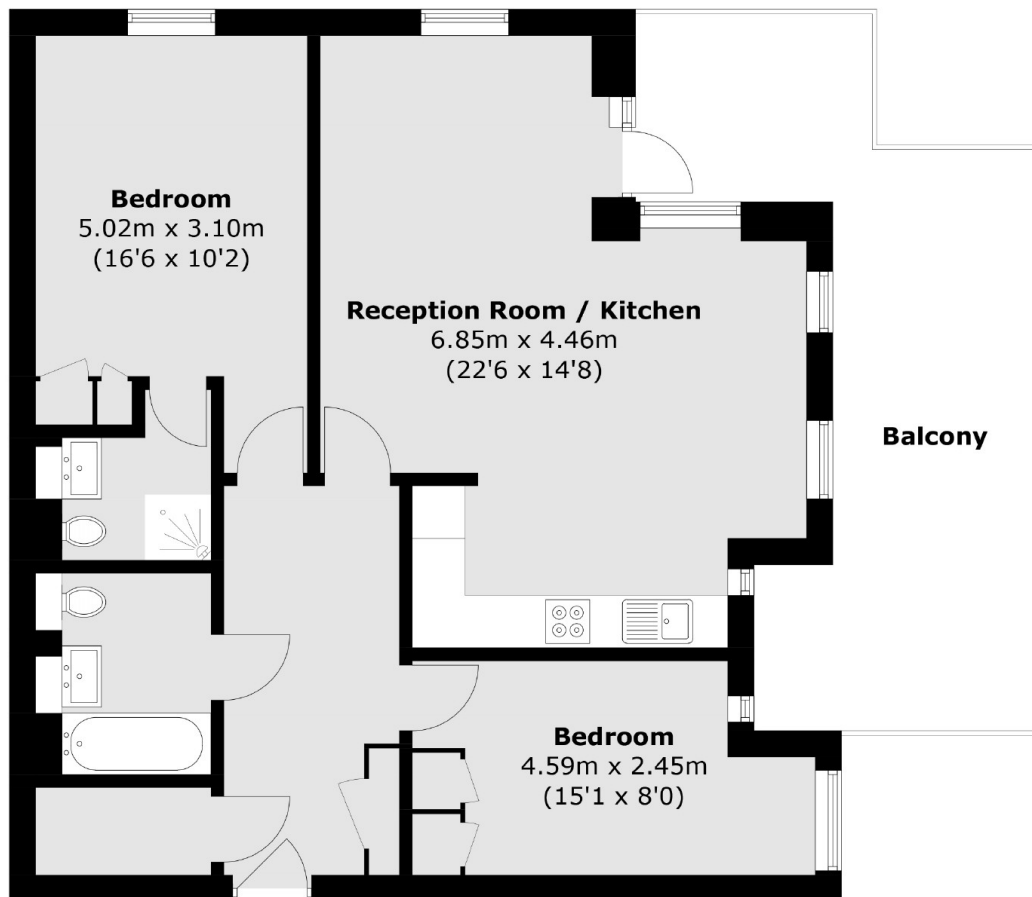
A new build riverside apartment that offers a private balcony. The property is a stone throw away from the River Thames and is close to local amenities, riverside pubs and transport links into London and out West. The property is offered with no onward chain and has parking.

Located right next to the River Thames, a very short walk to Kew Bridge mainline station and within half a mile of Kew Green, Strand on the Green and Kew Gardens.

Features

Two Bedrooms/Two
Bathrooms
No Chain
Riverside Development
Private Balcony
Close To Amenities &
Transport
Parking

Albany Court, London, W4



Total area (approx.): 77.3 sq. m (832.0 sq. ft)
Balcony area (approx.): 22.9 sq. m (246.5 sq. ft)

Dexters

Chiswick
388 Chiswick High Road
London
W4 5TF
Sales
020 8995 4321

Energy Rating: B. We aim to make our particulars both accurate and reliable. However they are not guaranteed; nor do they form part of an offer or contract. If you require clarification on any points then please contact us, especially if you're traveling some distance to view. Please note that appliances and heating systems have not been tested and therefore no warranties can be given as to their good working order.

 **RICS** | Regulated
Estate Agent
and Letting Agent

[dexters.co.uk](https://www.dexters.co.uk)