



## Albany Court, W4 £650,000

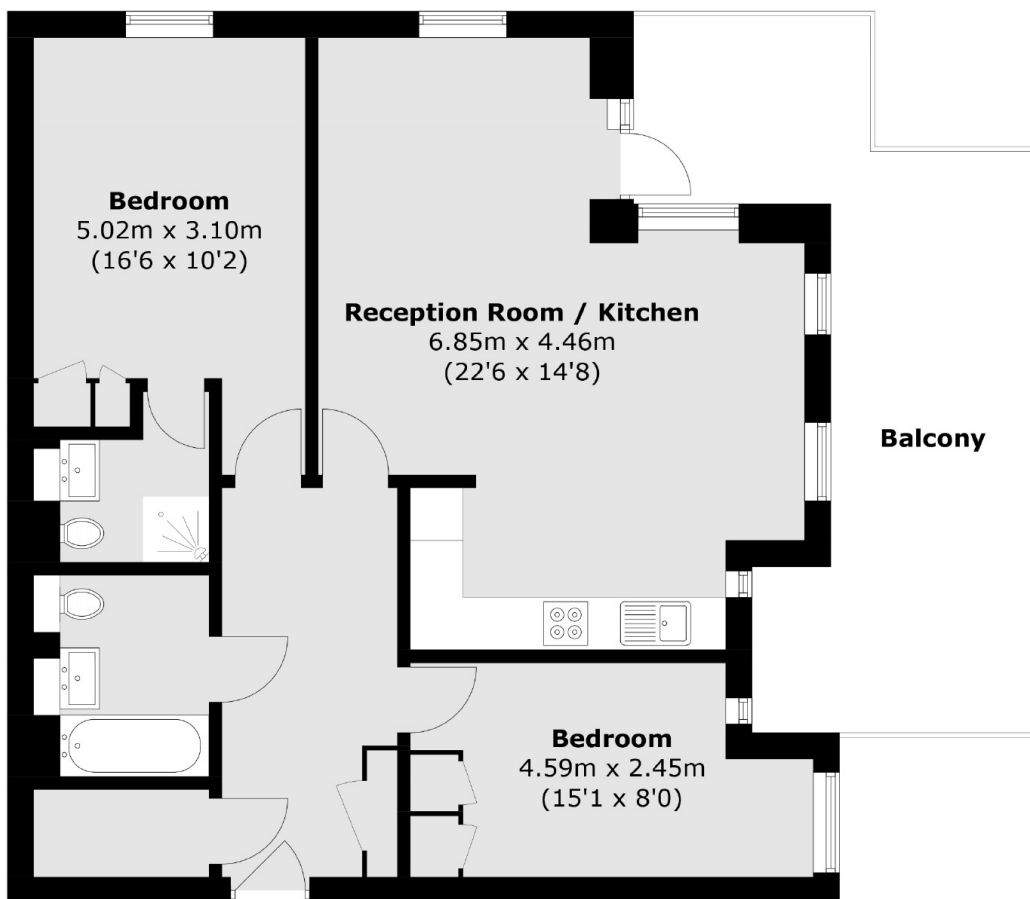
A new build riverside apartment that offers a private balcony. The property is a stone throw away from the River Thames and is close to local amenities, riverside pubs and transport links into London and out West. The property is offered with no onward chain.

Located right next to the River Thames, a very short walk to Kew Bridge mainline station and within half a mile of Kew Green, Strand on the Green and Kew Gardens.

### Features

- Two Bedrooms/Two Bathrooms
- No Chain
- Riverside Development
- Private Balcony
- Close To Amenities & Transport
- Kew Green

# Albany Court, London, W4



Total area (approx.): 77.3 sq. m (832.0 sq. ft)  
Balcony area (approx.): 22.9 sq. m (246.5 sq. ft)