



Pump House Crescent, TW8

£645,000

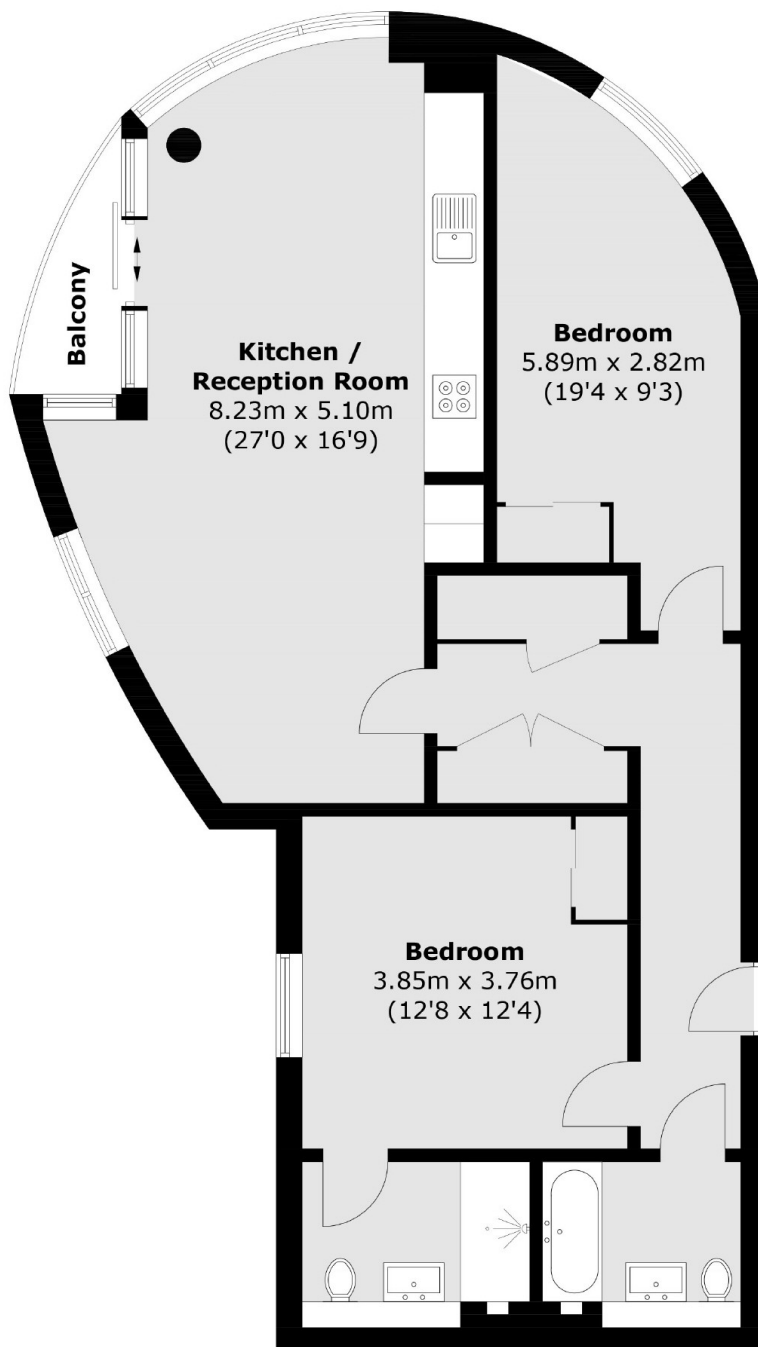
A bright and spacious two double bedroom, two bathroom modern apartment. With lift access, underground parking, south-facing balcony and long lease.

The Kew Bridge West development is located next to the River Thames and within walking distance to Kew Bridge station with direct links to Waterloo, while the motorist is well served by the A4/M4. There are also a number of bus routes close by.

Features

958 Sq/Ft
Two Double Bedrooms
Two Bathrooms
Underground Parking
Private Balcony
Long Lease

Pump House Crescent, Brentford, TW8



Total area (approx.): 89.0 sq. m (958.0 sq. ft)
Balcony area : 2.4 sq. m (25.8 sq. ft)

Dexters

Chiswick
388 Chiswick High Road
London
W4 5TF
Sales
020 8995 4321

Energy Rating: C. We aim to make our particulars both accurate and reliable. However they are not guaranteed; nor do they form part of an offer or contract. If you require clarification on any points then please contact us, especially if you're traveling some distance to view. Please note that appliances and heating systems have not been tested and therefore no warranties can be given as to their good working order.

 **RICS** | Regulated
Estate Agent
and Letting Agent

[dexters.co.uk](https://www.dexters.co.uk)