



Lateward Road, TW8

£700,000

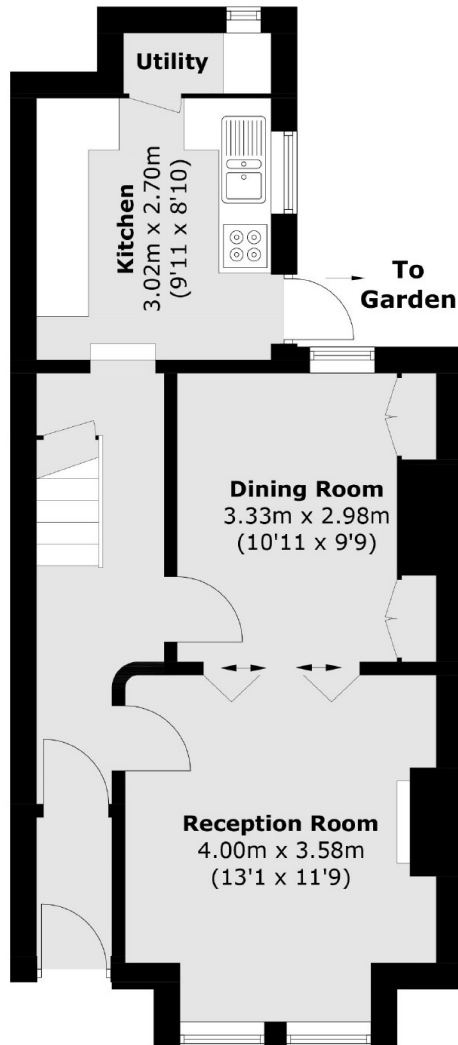
A well presented, two double bedroom period home with views across St. Paul's Recreation Ground. The property has scope to extend to the loft and rear (subject to the usual planning consents) and well retained period features.

Lateward Road is located within half a mile of Brentford School for Girls, Brentford High Street and Brentford Station providing a regular service into London Waterloo. The River Thames and a wide selection of bars and restaurants are also close by. There is also also a bike hiring rank opposite.

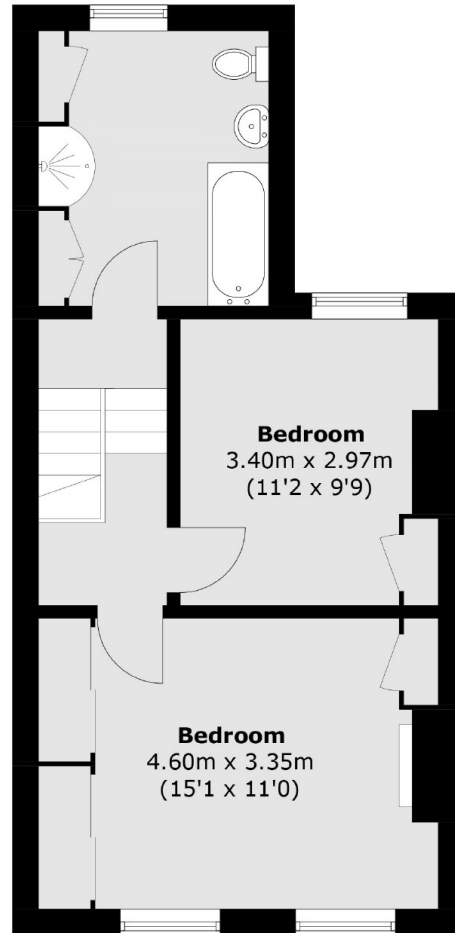
Features

- Two Double Bedrooms
- Potential To Extend (STPP)
- Utility Area
- Close To Schools
- Sought-After Road

Lateward Road, Brentford, TW8



Ground Floor



First Floor

Total area (approx.): 82.9 sq. m (892.3 sq. ft)