



## Lateward Road, TW8

£750,000

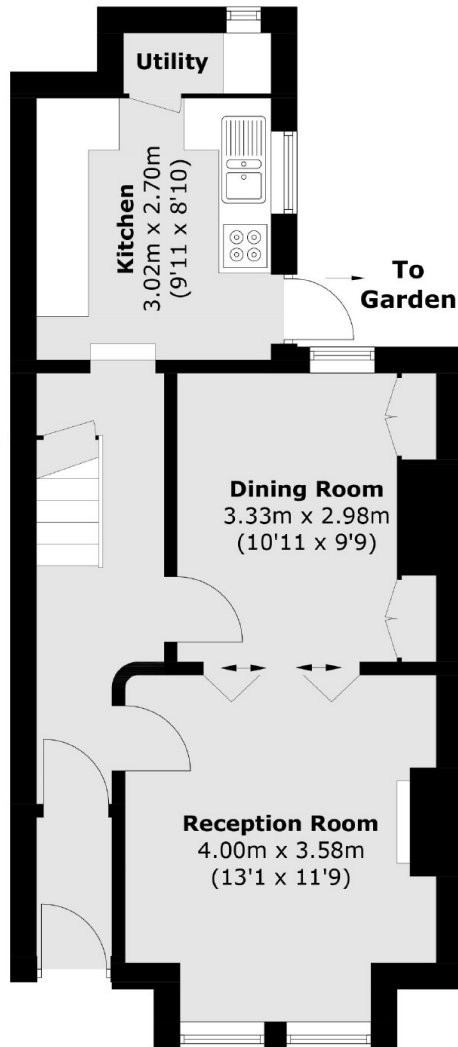
A well presented, two double bedroom period home with views across St. Paul's Recreation Ground. The property has scope to extend to the loft and rear (subject to the usual planning consents).

Lateward Road is located within half a mile of Brentford School for Girls, Brentford High Street and Brentford Station. The River Thames and a wide selection of bars and restaurants are also close by.

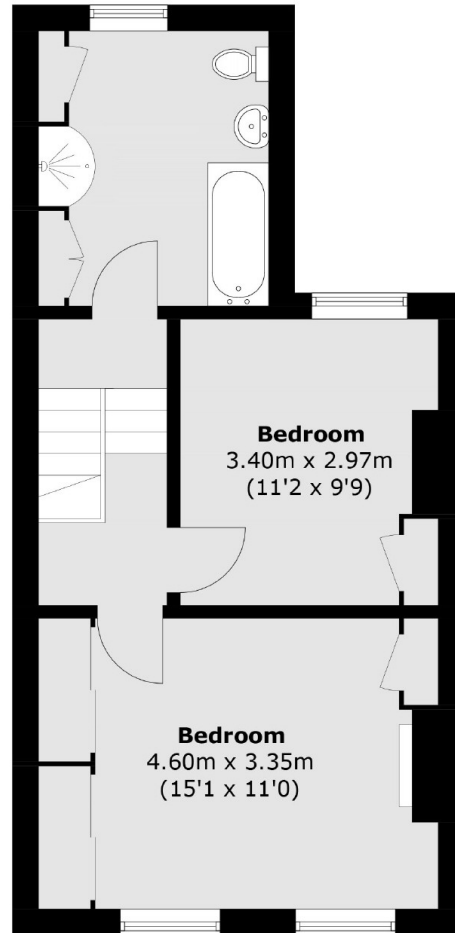
### Features

- Two Double Bedrooms
- Potential To Extend (STPP)
- Utility Area
- Close To Schools
- Sought-After Road

Lateward Road,  
Brentford, TW8



**Ground Floor**



**First Floor**

Total area (approx.): 82.9 sq. m (892.3 sq. ft)