



## Colonial Drive, W4

£600,000

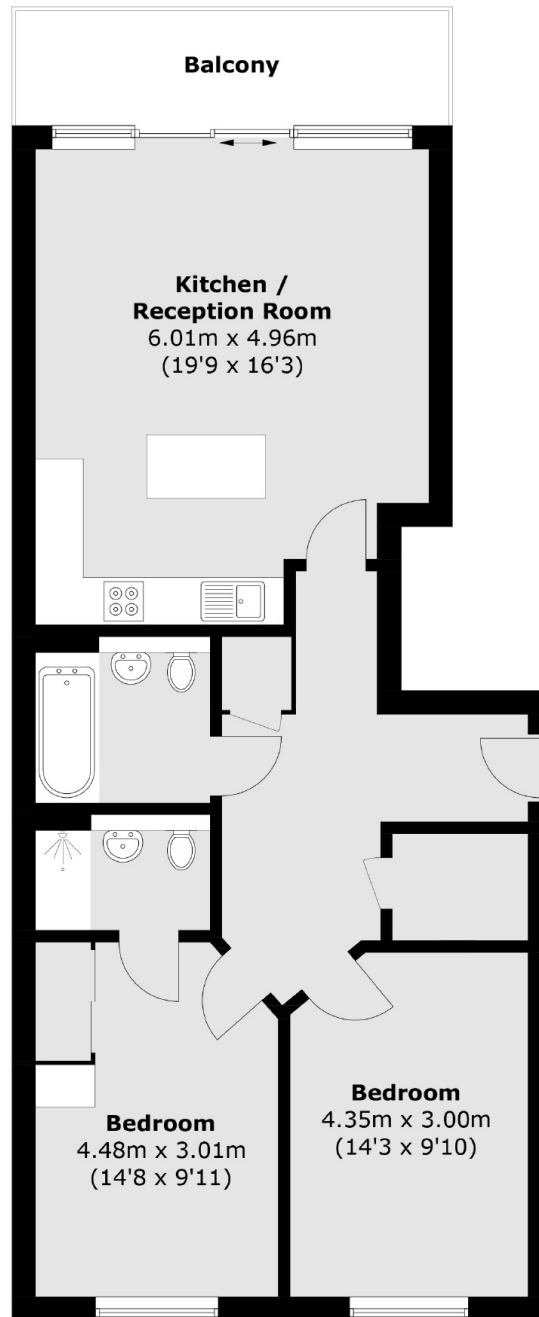
OIEO A modern two bedroom apartment situated in the heart of Chiswick. The property is in excellent condition throughout and comes with a balcony and a concierge.

Colonial Drive is located within half a mile from Chiswick Park tube station and the amenities on Chiswick High Road.

### Features

Two Bedrooms  
Two Bathrooms  
Private Balcony  
Concierge Service  
First Floor  
Central Location

Colonial Drive,  
London, W4



Total area (approx.): 79.8 sq. m (859.0 sq. ft)  
Balcony : 7.9 sq. m (85.0 sq. ft)

**Dexters**

Chiswick  
388 Chiswick High Road  
London  
W4 5TF  
Sales  
020 8995 4321

Energy Rating: B. We aim to make our particulars both accurate and reliable. However they are not guaranteed; nor do they form part of an offer or contract. If you require clarification on any points then please contact us, especially if you're traveling some distance to view. Please note that appliances and heating systems have not been tested and therefore no warranties can be given as to their good working order.

 **RICS** | Regulated  
Estate Agent  
and Letting Agent

[dexters.co.uk](https://www.dexters.co.uk)