



Thames Road, W4

£380 Per week

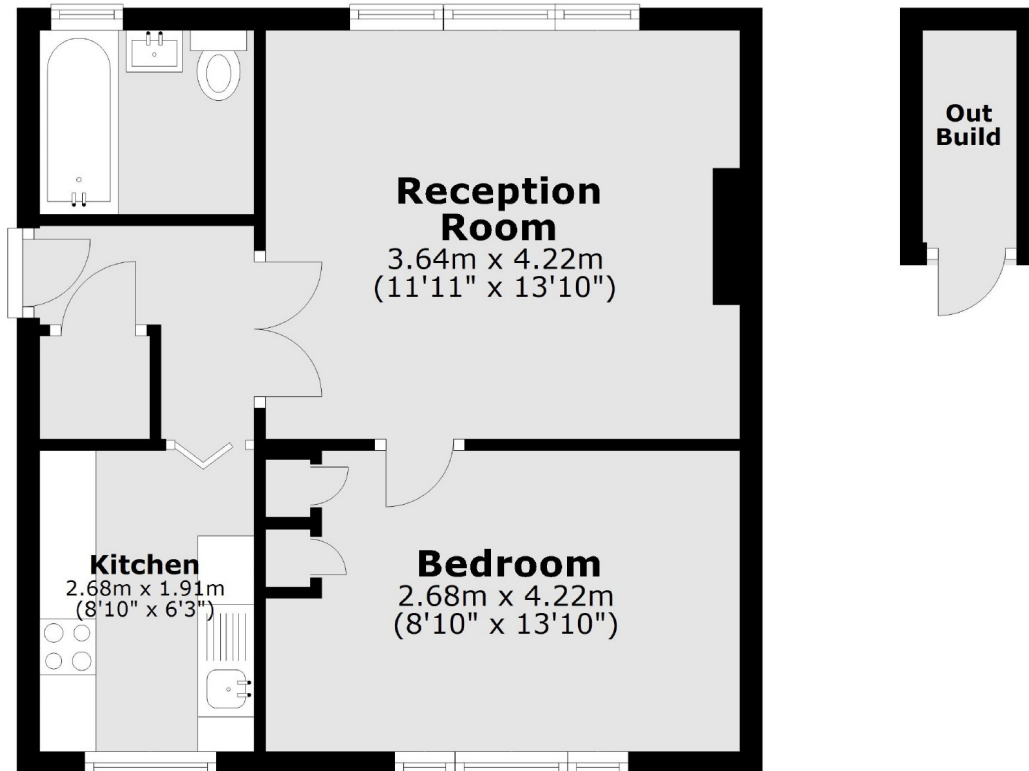
A great one bedroom flat in a terrific location close to the river, Kew Bridge station and Gunnersbury tube. The flat has a bright reception with laminate flooring, double bedroom with fitted storage, modern kitchen, tiled bathroom.

Thames Road is located within a half mile from Kew Bridge overground station and Gunnersbury underground station, as well as the many riverside pubs of Strand on the Green.

Features

One bedroom Flat
Purpose Built
Ground Floor flat
River Location
Communal Gardens

Thames Road, London, W4



Main area: Approx. 40.0 sq. metres (430.5 sq. feet)
Plus outbuildings, approx. 1.6 sq. metres (17.0 sq. feet)