



Watchfield Court, W4 £700,000

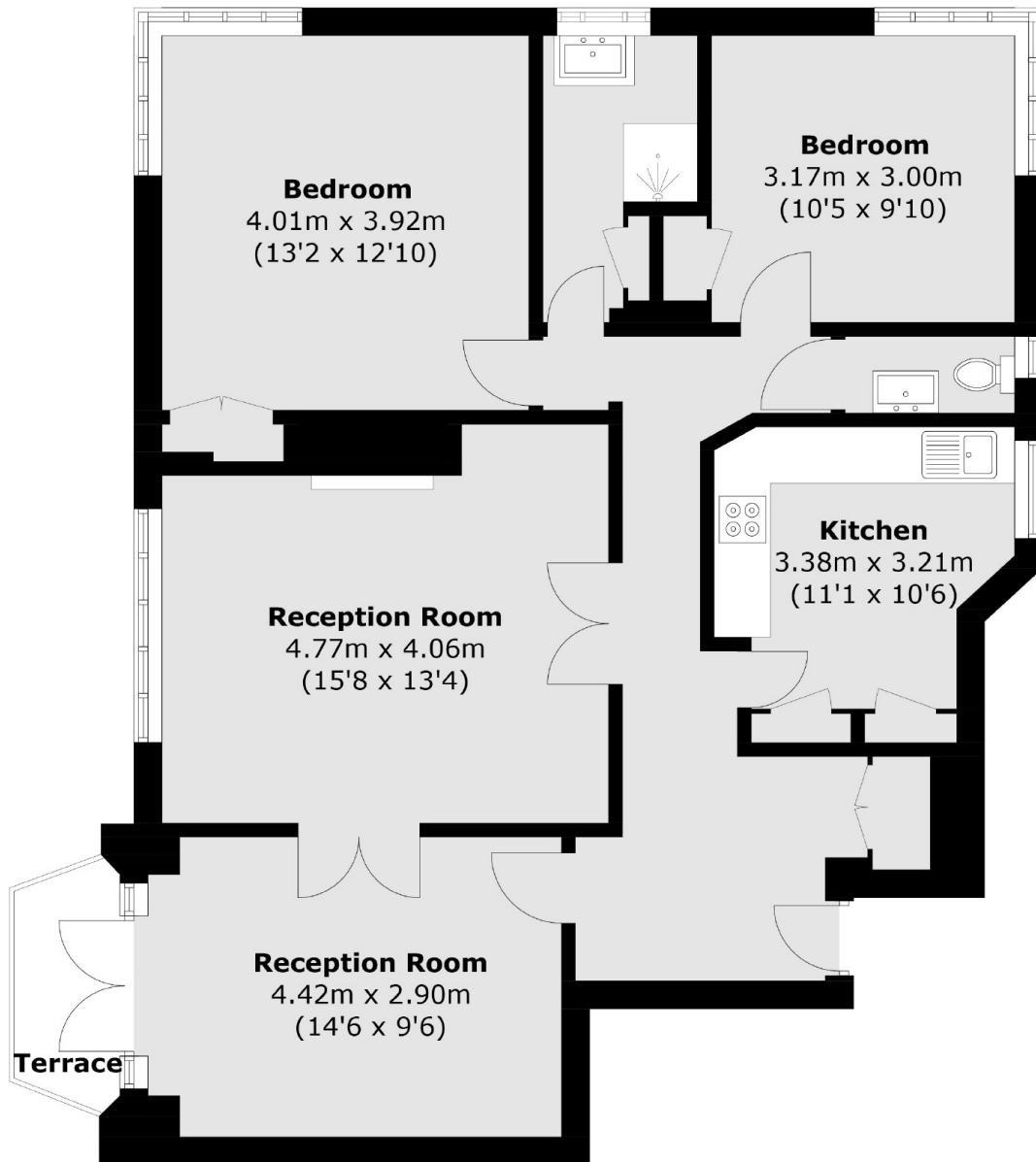
A bright and spacious two/three double bedroom ground floor apartment within this much sought-after development. With residents parking, private south-facing patio, well maintained communal garden, no onward chain and heating/hot water included within the service charge.

Watchfield Court is a well-maintained private development with on-site porter. Centrally located in Chiswick with easy access to many amenities along with excellent transport links such as Turnham Green and Chiswick Park Tube Stations, bus links and the A4/M4.

Features

Ground Floor
Two Double Bedrooms
Two Reception Rooms
Share Of Freehold
Residents Parking
No Onward Chain

Watchfield Court, London, W4



Total area (approx.): 95.8 sq. m (1,031.1 sq. ft)
Terrace area: 2.7 sq. m (29.1 sq. ft)