



Bridgman Road, W4

£497,950

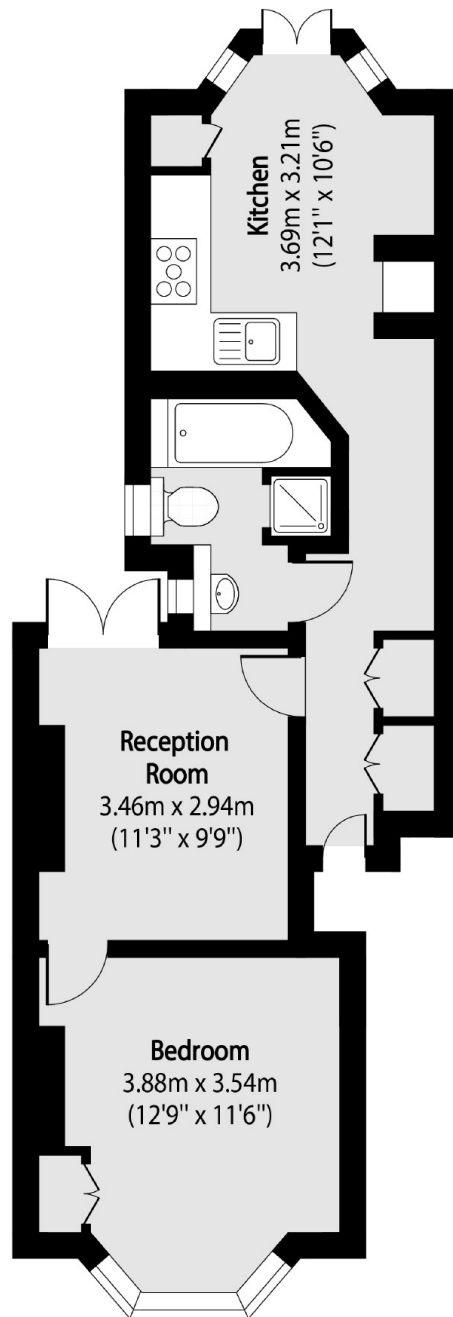
Set on the ground floor of a handsome period building, a one double bedroom garden flat with the potential to be extended (subject to the usual planning consents). With long lease, separate kitchen/dining and offered with no onward chain.

Bridgman Road is a residential street, ideally located within close proximity to the many amenities of Chiswick High Road and transport links. Turnham Green Station is approximately 0.9 miles away, Chiswick Park tube station is 0.6 miles away, and South Acton Station (Overground Service) is 0.1 miles away.

Features

- One Double Bedroom
- Ground Floor
- Private Garden
- Potential To Extend (STPP)
- Close To Transport
- No Onward Chain

Bridgman Road,
London, W4



Total area (approx): 47.37 sq m (509 sq. ft)

Dexters

Chiswick
388 Chiswick High Road
London
W4 5TF
Sales
020 8995 4321

Energy Rating: . We aim to make our particulars both accurate and reliable. However they are not guaranteed; nor do they form part of an offer or contract. If you require clarification on any points then please contact us, especially if you're traveling some distance to view. Please note that appliances and heating systems have not been tested and therefore no warranties can be given as to their good working order.

 **RICS** | Regulated
Estate Agent
and Letting Agent

[dexters.co.uk](https://www.dexters.co.uk)