



## Oliver Close, W4 £900,000

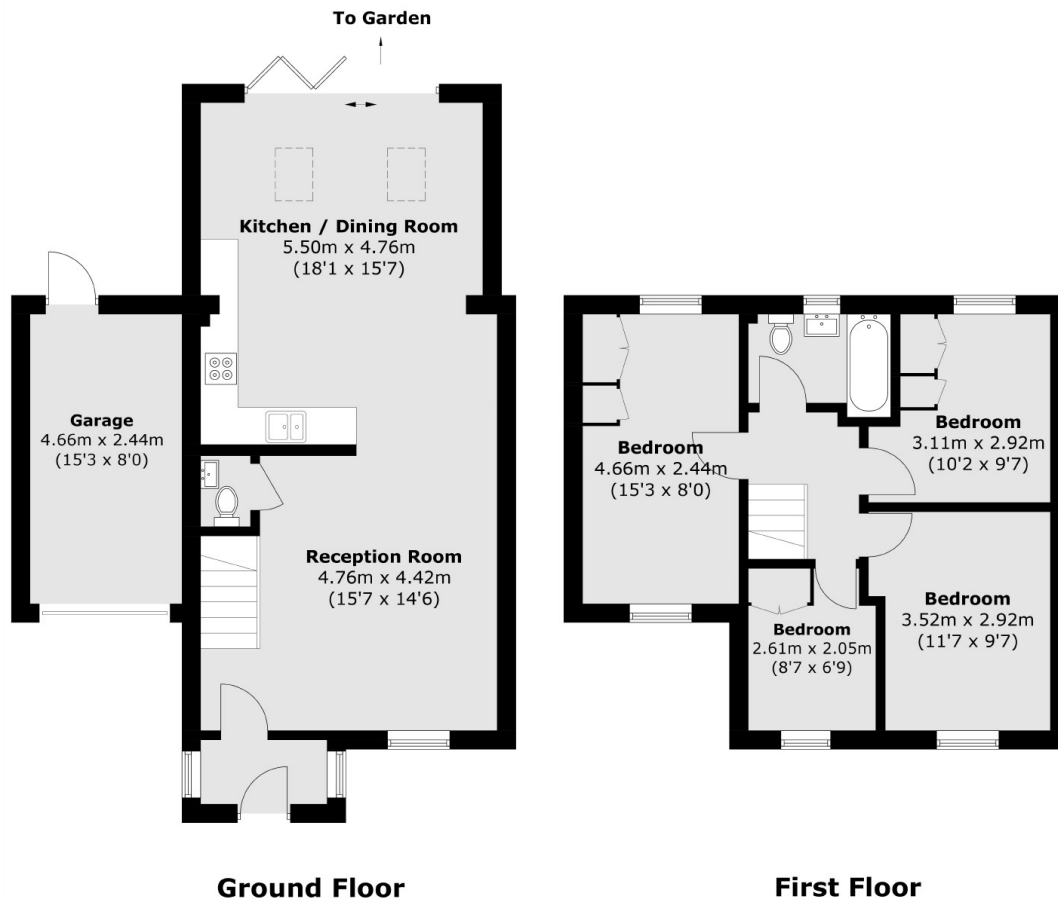
A well proportioned four bedroom, end of terrace house. With off-street parking for multiple cars, wide west-facing garden and offered with no onward chain.

Located within close proximity to the River and Strand on the Green school, as well as local shops along Thames Road. Gunnersbury tube station is 0.7 miles (approx 15 mins) walk away, and Chiswick mainline station is 0.8 miles walk away.

### Features

- End Of Terrace
- Four Bedrooms
- Off-Street Parking
- Garage
- West-Facing Garden
- No Onward Chain

# Oliver Close, London, W4



Total area (approx.): 95.2 sq. m (1,024.7 sq. ft)

Garage: 11.5 sq. m (123.8 sq. ft)

Total: 106.7 sq. m (1,148.5 sq. ft)