



Clayponds Lane, TW8

£285,000

A well presented one double bedroom six floor apartment, set within this popular development. The property offers open plan kitchen/reception, private balcony, residents gym and secure underground parking. Offered with no chain, this is perfect for first time buyer or BTL investors alike.

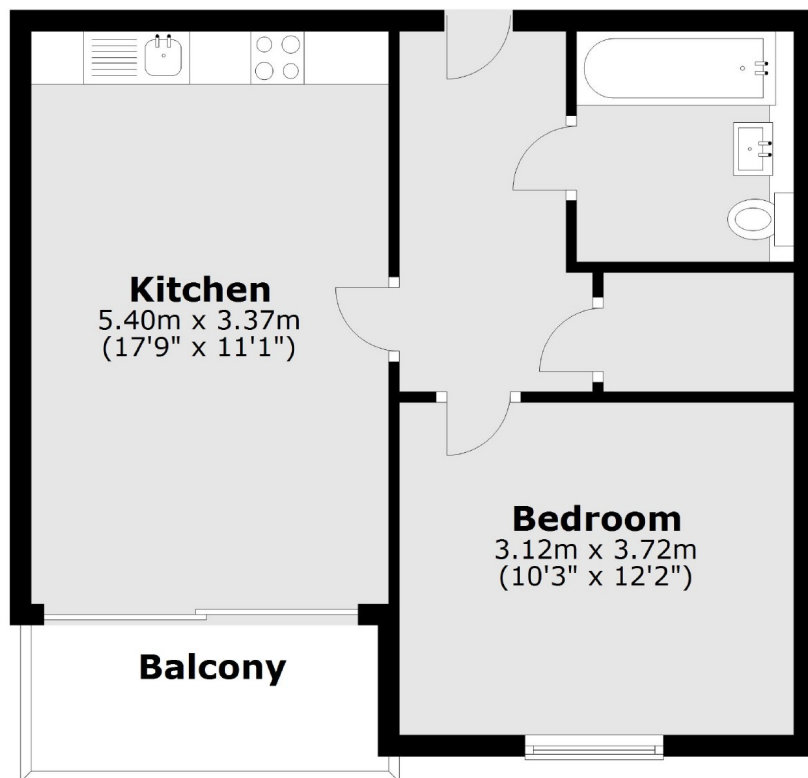
Simmonds House is located a quarter of a mile from Brentford mainline station which offers a direct link into London Waterloo. South Ealing underground station (Piccadilly Line) which has a direct service into London Heathrow is under half a mile away.

Features

- One Bedroom
- Private Balcony
- Secure Underground Parking
- Residents Gym
- Close To Amenities/Transport
- No Onward Chain

Clayponds Lane,
Brentford, TW8

Sixth Floor



Main area: Approx. 43.5 sq. metres (467.9 sq. feet)
Plus balconies, approx. 5.0 sq. metres (53.6 sq. feet)