



Acton Lane, W4

£625,000

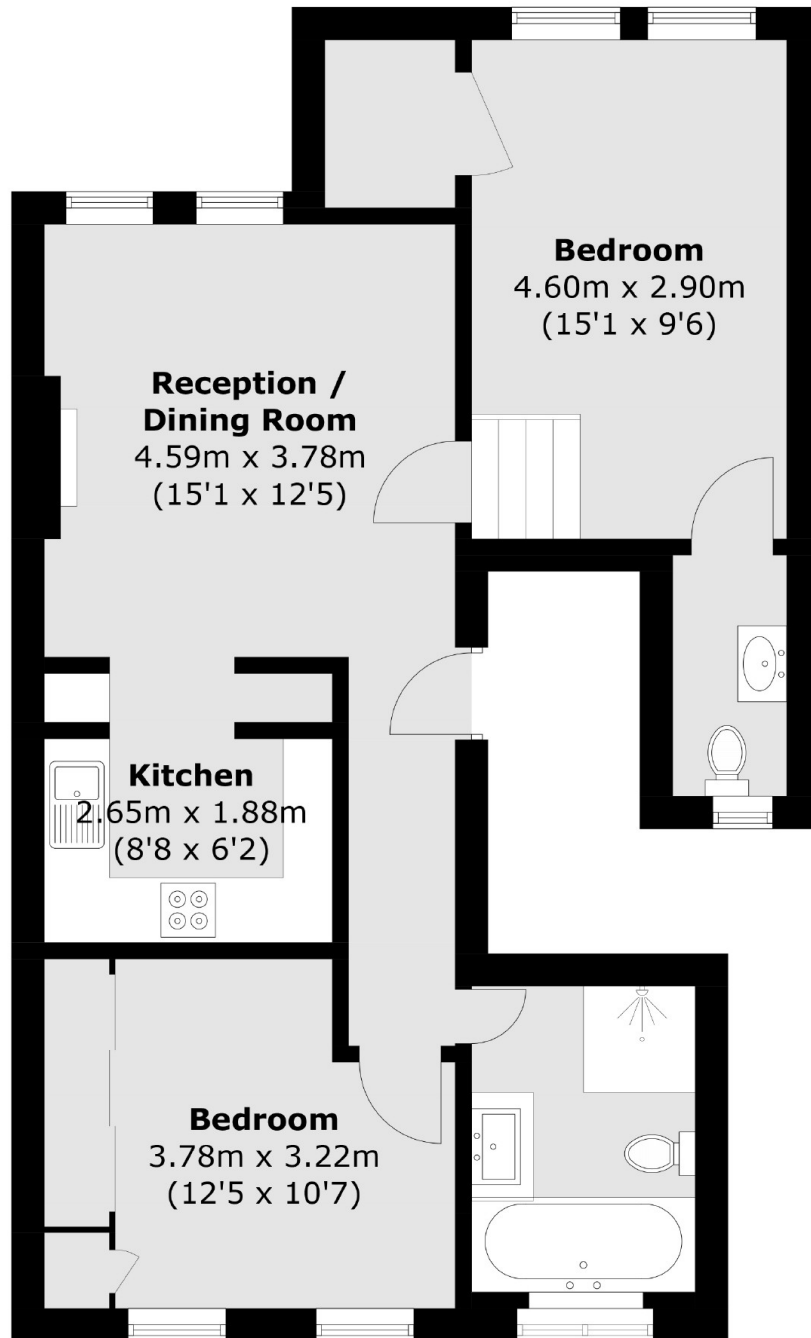
A well presented first floor two double bedroom, two bathroom period conversion with direct views across Acton Green.

Acton Lane is within easy reach of the boutique shops, pubs and eateries in Chiswick High Road and Turnham Green. Chiswick Park station is less than 100 meters down the road.

Features

Period Conversion
Two Bedrooms
Two Bathrooms
First Floor
Central Location
Close To Transport

Acton Lane,
London, W4



Total area (approx.): 63.0 sq. m (678.1 sq. ft)

Dexters

Chiswick
388 Chiswick High Road
London
W4 5TF
Sales
020 8995 4321

Energy Rating: . We aim to make our particulars both accurate and reliable. However they are not guaranteed; nor do they form part of an offer or contract. If you require clarification on any points then please contact us, especially if you're traveling some distance to view. Please note that appliances and heating systems have not been tested and therefore no warranties can be given as to their good working order.

RICS | Regulated
Estate Agent
and Letting Agent

dexters.co.uk