

The Avenue, W4

£299,950

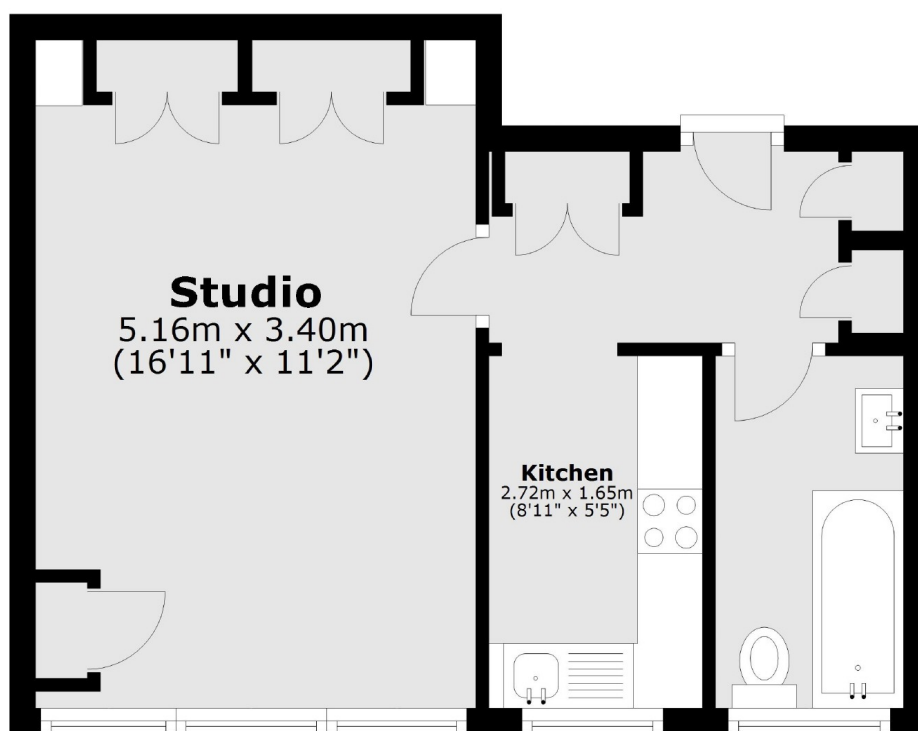
A bright and well placed ground floor studio apartment centrally located in Bedford Park. With separate kitchen and bathroom, long lease, ample storage and offered with no onward chain.

Ormsby Lodge is located within a short walk of Chiswick High Road's shops, cafes and restaurants and local parks. Transport links include Turnham Green tube station, local bus routes and the A4/M4 for routes in and out of London

Features

- Studio
- Ground Floor
- Separate Kitchen
- Long Lease
- Bedford Park
- No Onward Chain

The Avenue,
London, W4



Total area: approx. 31.7 sq. metres (341.6 sq. feet)