



## Fletcher Road, W4

### £599,950

A well presented first floor maisonette on this tree-lined residential road. With private entrance and rear garden, loft storage and long lease.

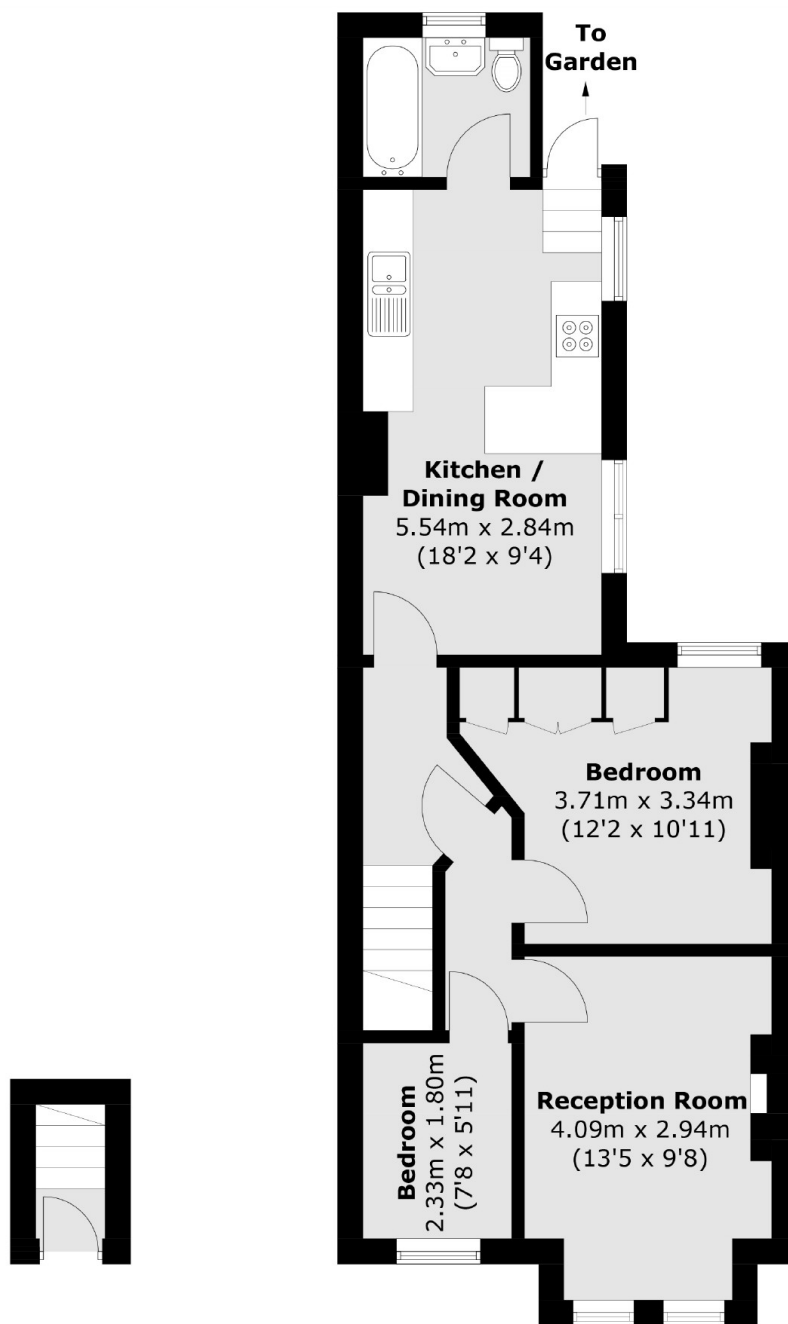
Fletcher Road is within close proximity of Chiswick High Road and both Turnham Green (District & Piccadilly Line) and Chiswick Park (District Line) Underground stations as well as South Acton Overground station.

### Features

Maisonette  
Two Bedrooms  
First Floor  
Purpose Built

Private Garden

Fletcher Road,  
London, W4



**Ground Floor**

**First Floor**

Total area (approx.): 55.8 sq. m (600.6 sq. ft)

**Dexters**

Chiswick  
388 Chiswick High Road  
London  
W4 5TF  
Sales  
020 8995 4321

Energy Rating: . We aim to make our particulars both accurate and reliable. However they are not guaranteed; nor do they form part of an offer or contract. If you require clarification on any points then please contact us, especially if you're traveling some distance to view. Please note that appliances and heating systems have not been tested and therefore no warranties can be given as to their good working order.

 **RICS** | Regulated  
Estate Agent  
and Letting Agent

dexters.co.uk