



Chiswick High Road, W4 £625,000

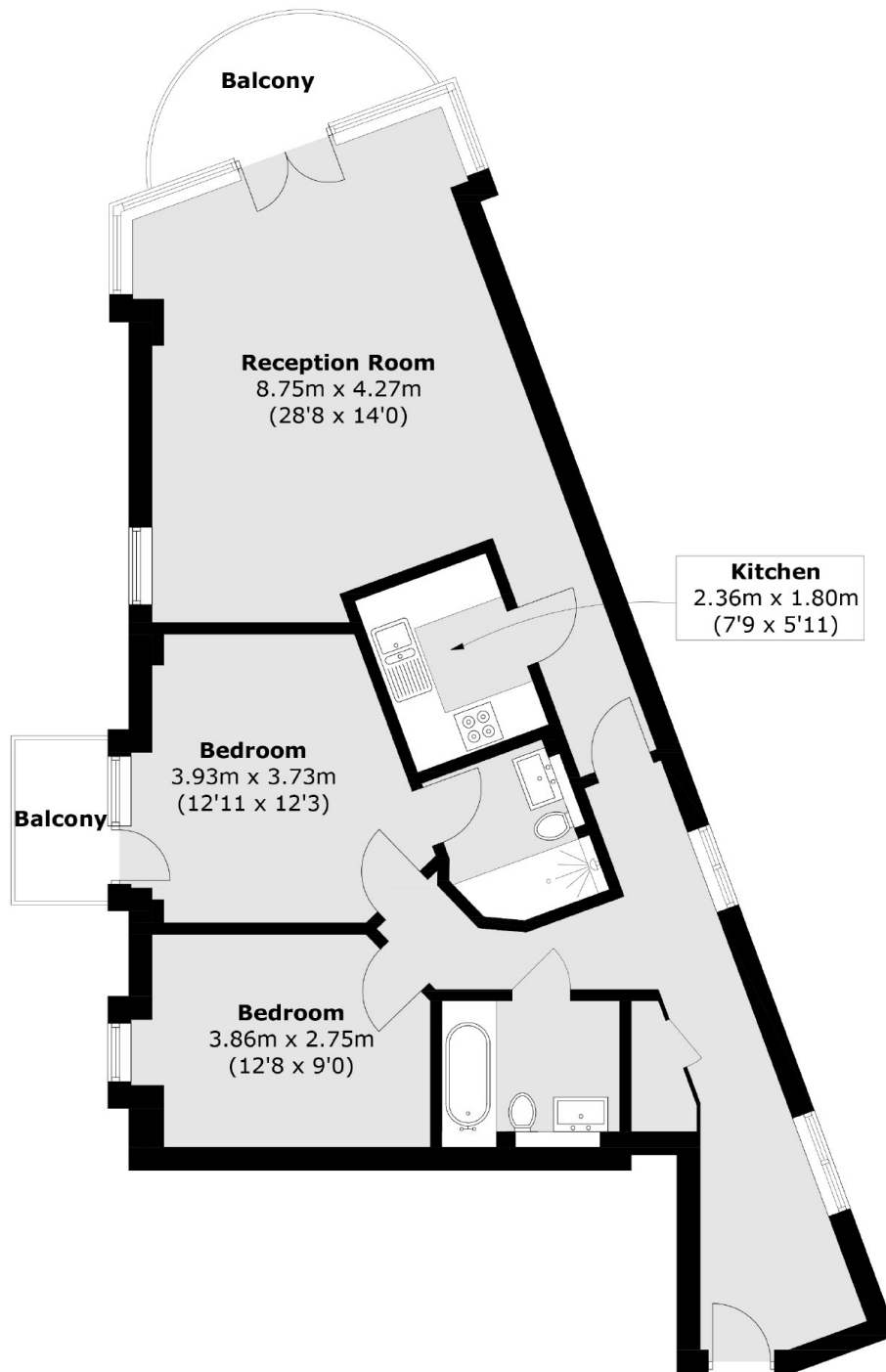
A well presented third floor two double bedroom, two bathroom apartment within this popular development. With modern finish, two balconies, long lease, allocated parking and offered with no onward chain.

Chiswick High Road offers a brilliant array of shops, restaurants and cafés to choose from, as well as being serviced by Gunnersbury and Chiswick Park stations. The Thames riverside and Chiswick House and grounds are popular spots nearby.

Features

- Two Double Bedrooms
- Two Bathrooms
- Two Balconies
- Lift Access
- Allocated Underground Parking
- No Onward Chain

Chiswick High Road,
London, W4



Total area (approx.): 82.7 sq. m (890.2 sq. ft)
Balcony area : 7.0 sq. m (75.3 sq. ft)