



## Aitman Drive, TW8

£300,000

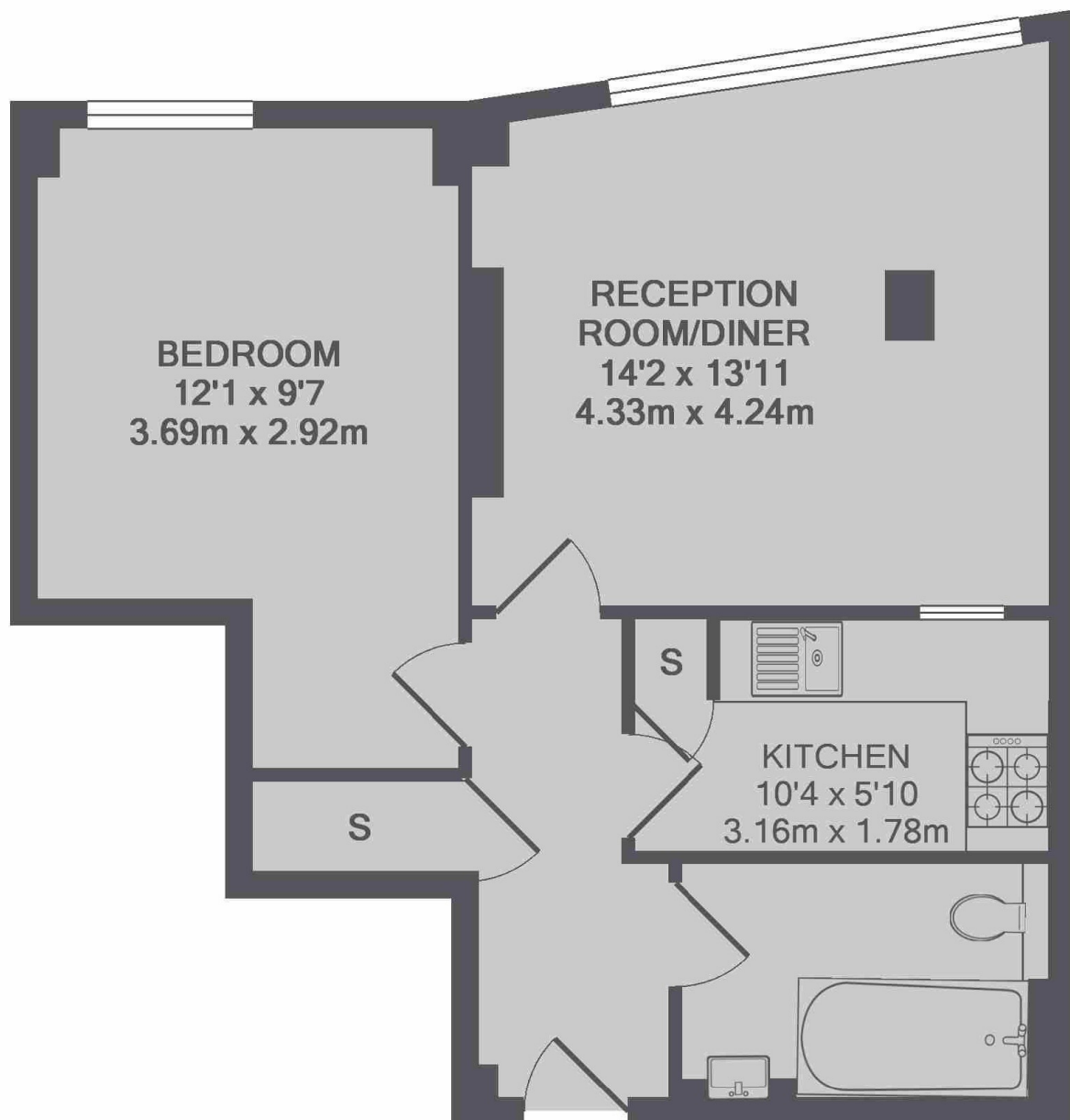
A one bedroom apartment in this modern gated development by the River Thames. This property is situated on the first floor and the comes with allocated off-street parking, a concierge service and a residents gym.

Located just yards from Kew Bridge mainline station, which has direct links to Waterloo and well-positioned for access to the A4/M4 motorways for those needing access to Heathrow.

### Features

- One Bedroom
- Gated Development
- Off-Street Parking
- Concierge Service
- Residents Gym
- No Onward Chain

Aitman Drive,  
Brentford, TW8



TOTAL APPROX. FLOOR AREA 511 SQ.FT. (47.5 SQ.M.)

**Dexters**

Chiswick  
388 Chiswick High Road  
London  
W4 5TF  
Sales  
020 8995 4321

Energy Rating: C. We aim to make our particulars both accurate and reliable. However they are not guaranteed; nor do they form part of an offer or contract. If you require clarification on any points then please contact us, especially if you're traveling some distance to view. Please note that appliances and heating systems have not been tested and therefore no warranties can be given as to their good working order.

 **RICS** | Regulated  
Estate Agent  
and Letting Agent

[dexters.co.uk](https://www.dexters.co.uk)