



## Arlington Gardens, W4

£575,000

A bright and well presented first floor, two bedroom period conversion in central Chiswick. With open-plan living, share of freehold and no onward chain.

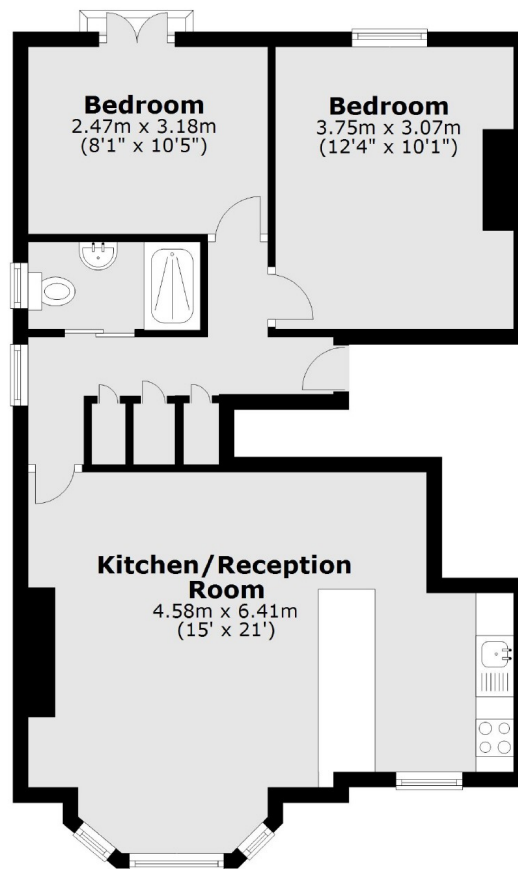
Ideally located, with Turnham Green and the array of amenities on Chiswick High Road all within easy reach. Chiswick Park station is a short walk for access to the tube.

### Features

- Two Bedrooms
- First Floor
- Share Of Freehold
- Modern Throughout
- Central Location
- No Onward Chain

# Arlington Gardens, London, W4

## First Floor



Total area: approx. 56.9 sq. metres (612.3 sq. feet)