



## Durham Wharf Drive, TW8

### £525,000

An attractive and spacious three bedroom apartment with a private balcony overlooking the canals of Brentford Lock West. The property also benefits from a convenient allocated parking space in front of the building. This apartment is offered with no onward chain.

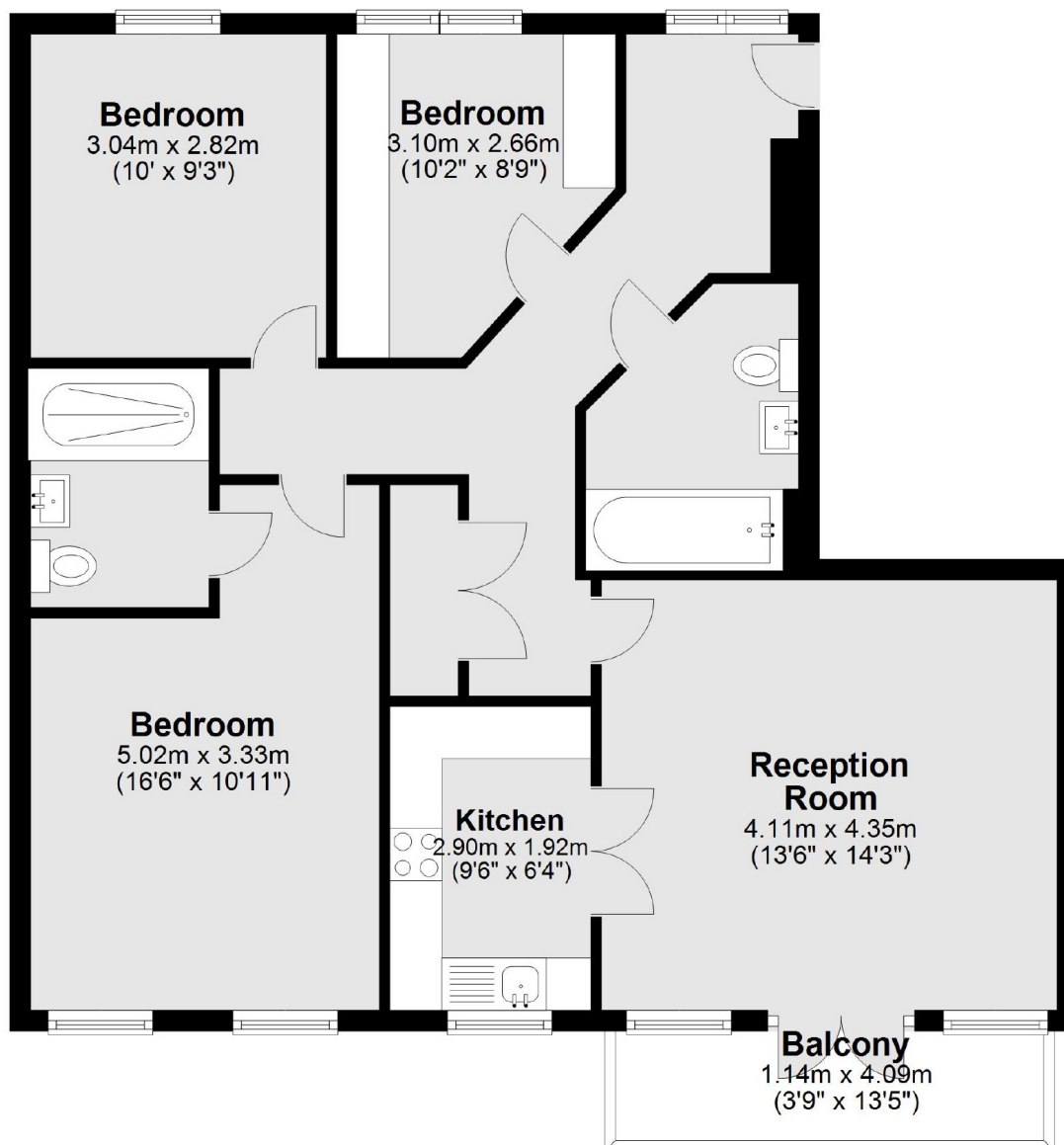
Spruce house offers a stylish and tranquil location overlooking the Grand Union Canal and the picturesque Brentford Lock. This sustainable development is moments away from Brentford high street and can easily access the selection of shops, cafés and restaurants the area has to offer.

### Features

- No Onward Chain
- Riverside Location
- Three Bedrooms
- Close To Amenities & Transport
- Private Balcony
- Allocated Parking

Durham Wharf Drive,  
Brentford, TW8

### First Floor



Main area: Approx. 78.6 sq. metres (845.5 sq. feet)  
Plus balconies, approx. 4.7 sq. metres (50.3 sq. feet)

**Dexters**

Chiswick  
388 Chiswick High Road  
London  
W4 5TF  
Sales  
020 8995 4321

Energy Rating: B. We aim to make our particulars both accurate and reliable. However they are not guaranteed; nor do they form part of an offer or contract. If you require clarification on any points then please contact us, especially if you're traveling some distance to view. Please note that appliances and heating systems have not been tested and therefore no warranties can be given as to their good working order.

 **RICS** | Regulated  
Estate Agent  
and Letting Agent

dexters.co.uk