



## Sutton Court, W4

£950,000

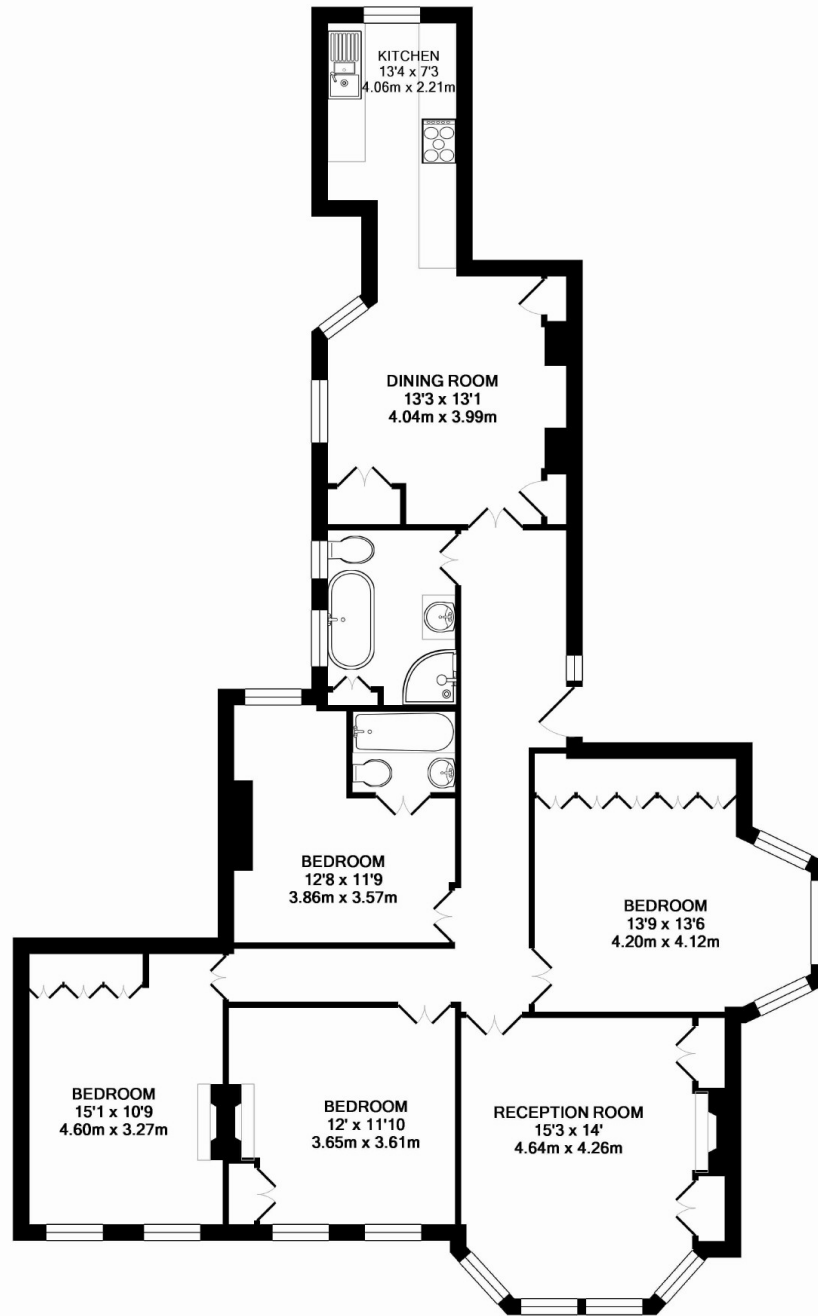
A well presented penthouse, four double bedroom apartment within this much sought-after mansion block. Offering in excess of 1,361 sq/ft of internal accommodation, the property further benefits from well maintained communal gardens, underground bicycle storage and share of the freehold.

Located close to the grounds of Chiswick Park or the local shops, bars and restaurants of Fauconberg Village. The nearest train station is Chiswick overground and the E3 bus runs from directly in front of the property to Turnham Green for the tube.

### Features

- Four Double Bedrooms
- Two Bathrooms
- Penthouse
- Share Of Freehold
- Communal Gardens
- No Onward Chain

# Sutton Court, London, W4



SUTTON COURT, W4  
TOTAL APPROX. FLOOR AREA 1361 SQ.FT. (126.4 SQ.M.)

All measurements taken to RICS Guidelines for Gross Internal Area. Whilst every attempt has been made to ensure the accuracy of the floor plan contained here, all measurements are approximate and no responsibility is taken for any error, omission or misstatement. This plan is for illustrative purposes only and should be used as such by any prospective purchaser. The services, systems and appliances shown have not been tested and no guarantee as to their operability or efficiency can be given.

Made with Metmap ©2015

# Dexters

Chiswick  
388 Chiswick High Road  
London  
W4 5TF

Sales  
020 8995 4321

Energy Rating: E. We aim to make our particulars both accurate and reliable. However they are not guaranteed; nor do they form part of an offer or contract. If you require clarification on any points then please contact us, especially if you're traveling some distance to view. Please note that appliances and heating systems have not been tested and therefore no warranties can be given as to their good working order.

 **RICS** Regulated  
Estate Agent  
and Letting Agent

[dexters.co.uk](http://dexters.co.uk)