



Somerset Road, TW8

£1,100,000

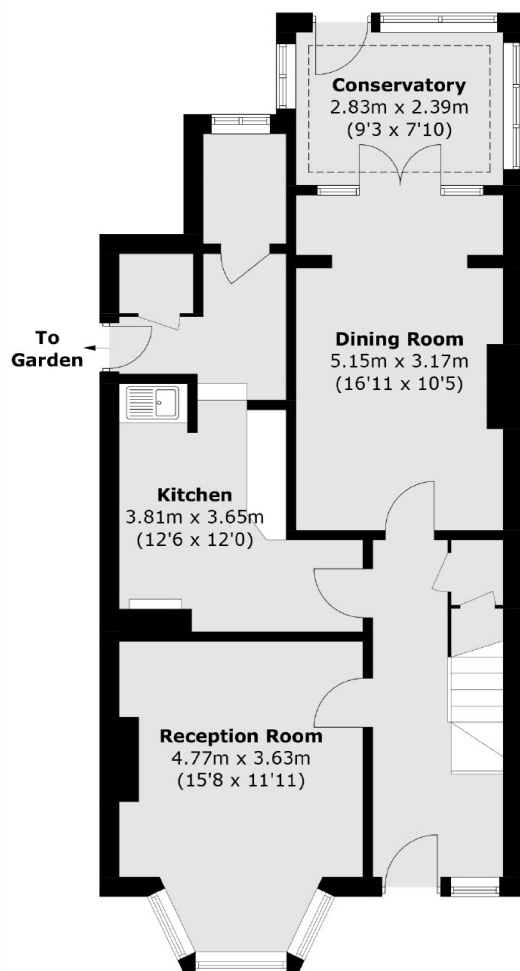
Nestled within the historic 'The Butts Conservation Area', a four double bedroom family home which has not been to market since it was first built in 1906, handed down through the family of the current owner. With off-street parking, south-facing garden and no onward chain.

Brentford Mainline Station is 0.2 miles and local buses connect to Boston Manor, Ealing and Ealing Broadway Underground Stations. The A4/M4 gives access to Heathrow Airport to the west and central London.

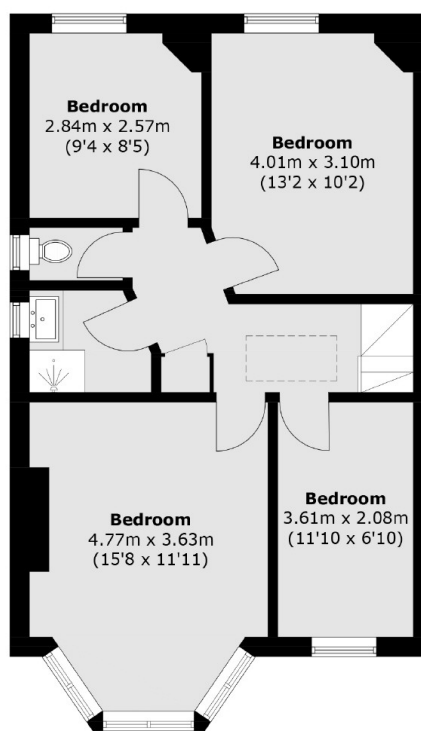
Features

- Four Double Bedrooms
- Semi-Detached
- South-Facing Garden
- Off-Street Parking
- Potential To Extend (STPP)
- No Onward Chain

Somerset Road, Brentford, TW8



Ground Floor



First Floor

Total area (approx.): 129.6 sq. m (1,395.0 sq. ft)