



**Ellesmere Road, W4**

**£969** Per week

**Dexters**



## Ellesmere Road, W4

A four double bedroom house set over three floors with two reception rooms, a separate modern kitchen, three bathrooms and a private garden.

This four bedroom house offers a vast amount of entertaining space with wood flooring in the main reception and space for dining. There is a second reception overlooking the private garden. There is a studio at the back of the garden that is available to include in the rent for an additional £399 per month.

The modern 18 foot separate kitchen offers everything that family life demands including a central island, plenty of built-in storage and tiled floors.

The master bedroom has an en suite, there are two further bathrooms, three further double bedrooms and an additional cloakroom on the ground floor.

Ellesmere Road offers excellent access to the M4 to the west, the A4 to the east, Chiswick railway station and Chiswick High Road.

### Features

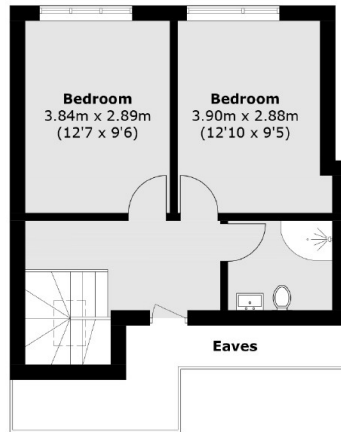
- Four Bedrooms
- Three Bathrooms
- Two Receptions
- Private Garden
- Three Floors
- Central Location



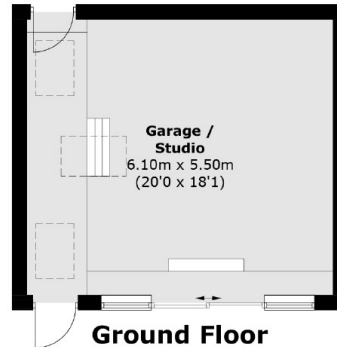




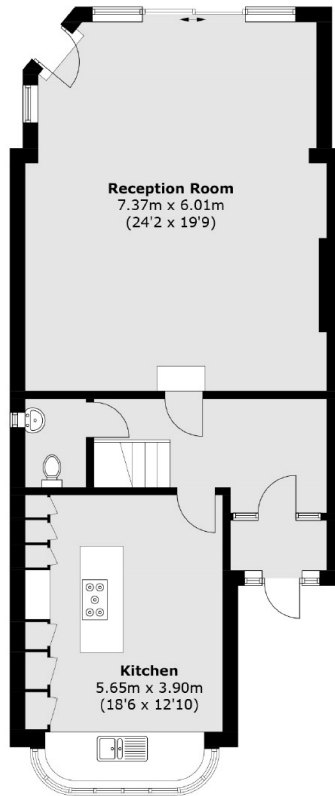
# Ellesmere Road, London, W4



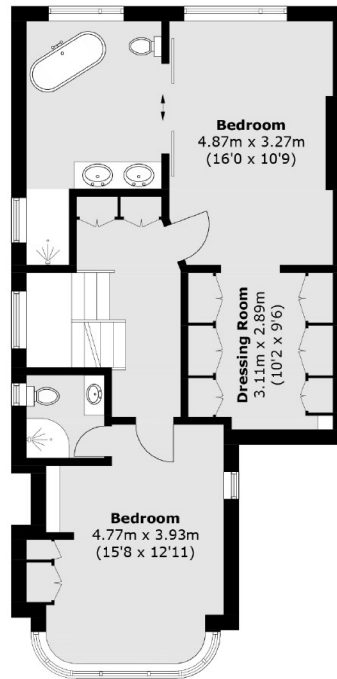
**Second Floor**



**Ground Floor**  
(Not Shown In Actual  
Location / Orientation)



**Ground Floor**



**First Floor**

Total area (approx.): 183.3 sq. m (1,973.1 sq. ft)  
Garage / Studio: 34.1 sq. m (367.0 sq. ft)  
(Excluding Eaves)