



Thames Road, W4

£325,000

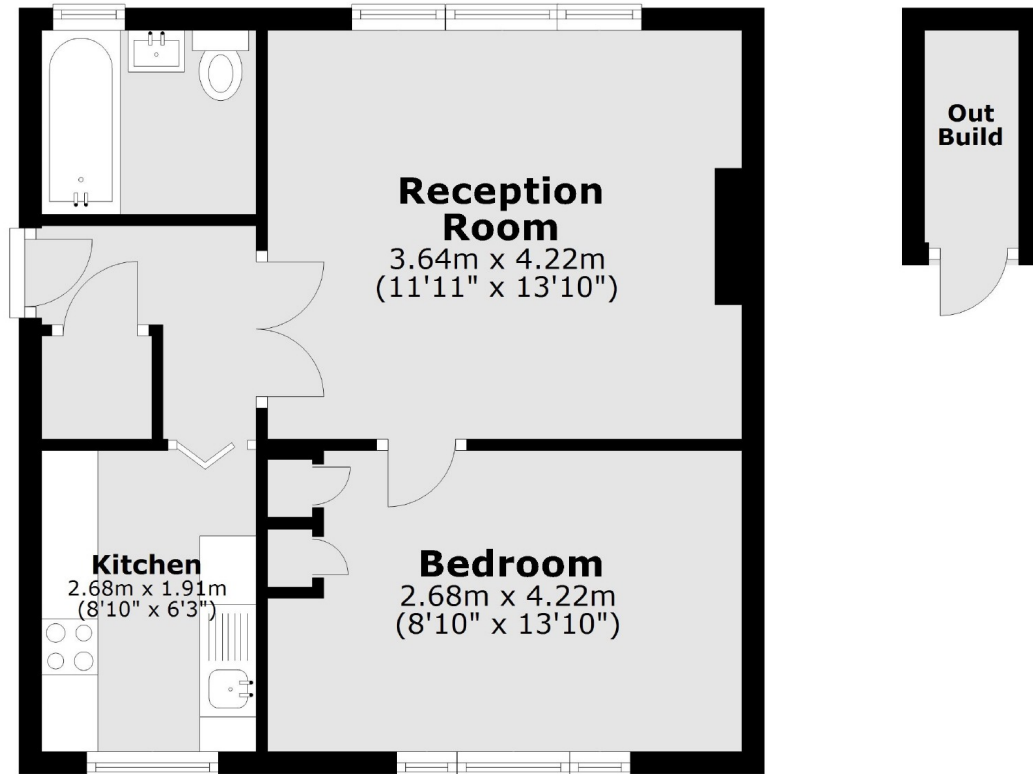
Offers in excess of A modern ground floor, one double bedroom flat in this popular development. The flat has a bright reception room with laminate flooring, double bedroom with fitted storage, external storage unit and is offered with no onward chain.

Thames Road is located within a half mile from Kew Bridge overground station and Gunnersbury underground station, as well as the many riverside pubs of Strand on the Green.

Features

- Ground Floor
- One Double Bedroom
- Modern Specification
- Riverside Location
- External Storage
- No Onward Chain

Thames Road,
London, W4



Main area: Approx. 40.0 sq. metres (430.5 sq. feet)
Plus outbuildings, approx. 1.6 sq. metres (17.0 sq. feet)

Dexters

Chiswick
388 Chiswick High Road
London
W4 5TF
Sales
020 8995 4321

Energy Rating: D. We aim to make our particulars both accurate and reliable. However they are not guaranteed; nor do they form part of an offer or contract. If you require clarification on any points then please contact us, especially if you're traveling some distance to view. Please note that appliances and heating systems have not been tested and therefore no warranties can be given as to their good working order.

 **RICS** | Regulated
Estate Agent
and Letting Agent

[dexters.co.uk](https://www.dexters.co.uk)