



## Goat Wharf, TW8

### £369,000

An immaculately presented two double bedroom, two bathroom apartment situated within this well sought-after development in Brentford. The apartment has a spacious open plan kitchen / living space, a large master bedroom with en suite, a second bedroom and a separate bathroom. The apartment benefits from floor to ceiling windows, a modern finish throughout, in addition to allocated parking. All offered with no onward chain.

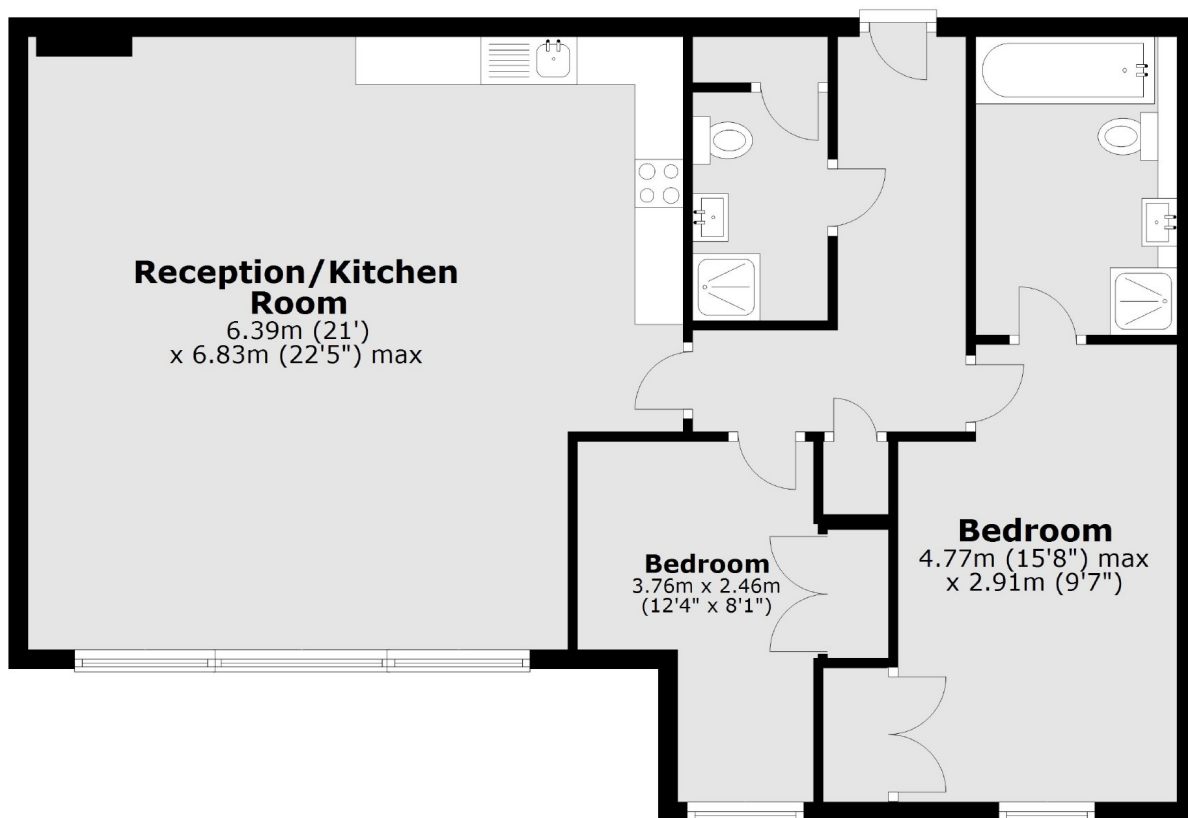
Situated within the Ferry Quays waterside community, Goat Wharf is close to Brentford High Street. It is within half a mile from Brentford overground station and a short drive from the M4/A4 providing great access in and out of London.

### Features

- Two Double Bedrooms
- Two Bathrooms
- Open Plan Kitchen & Living Space
- Floor to Ceiling Windows
- Lift Access
- Allocated Secure Parking
- Close To Amenities
- Riverside Development
- No Onward Chain

Goat Wharf,  
Brentford, TW8

### Fourth Floor



Total area: approx. 84.8 sq. metres (913.0 sq. feet)