

## Brent Way, TW8

£575,000

Stunning one bedroom, one bathroom apartment in Hollandbury House, situated in the new and highly sought after 'Brentford Project'.

The luxury apartment has a contemporary open plan living space and kitchen. The spacious bedroom offers impressive integrated storage, and the bright reception room boasts access to a large private balcony with uninterrupted views of the river, Syon Park and Kew Gardens. The building also has a large communal roof terrace, boasting magnificent, uninterrupted views.

Residents of The Brentford Project benefit from the development's amenities including concierge services, residents lounge, state of the art gym and a beautiful heated open air pool.

Conveniently located to major road links, with the A4, and M4 motorway running through Brentford giving easy access into central London and also out towards Heathrow, and further afield to Reading, Bristol and the West Country.

### Features

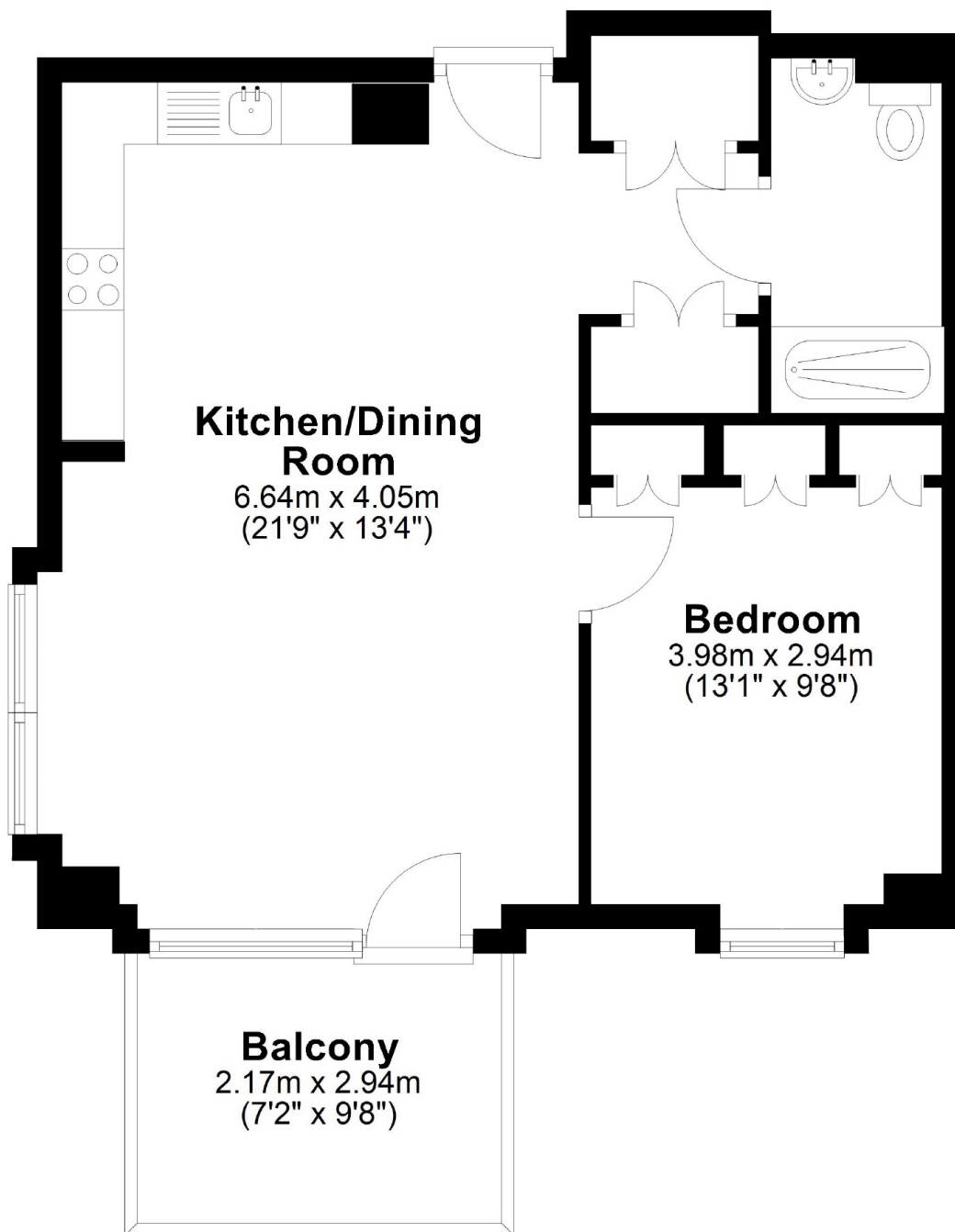
- One Bedroom Apartment
- Private Balcony
- Uninterrupted Views of Syon Park and Kew Gardens
- Concierge Services
- Resident's Swimming Pool & Gym
- Communal Roof Terrace
- Parking Space in Secure Car Park
- Excellent Transport Links

Brent Way,  
Brentford, TW8

## Eighth Floor

Main area: approx. 49.3 sq. metres (530.4 sq. feet)

Plus balconies, approx. 6.7 sq. metres (72.0 sq. feet)



**Dexters**

Chiswick  
388 Chiswick High Road  
London  
W4 5TF  
Sales  
020 8995 4321

Energy Rating: B. We aim to make our particulars both accurate and reliable. However they are not guaranteed; nor do they form part of an offer or contract. If you require clarification on any points then please contact us, especially if you're traveling some distance to view. Please note that appliances and heating systems have not been tested and therefore no warranties can be given as to their good working order.

**RICS** | Regulated  
Estate Agent  
and Letting Agent

dexters.co.uk