



Thorney Hedge Road, W4 £699,950

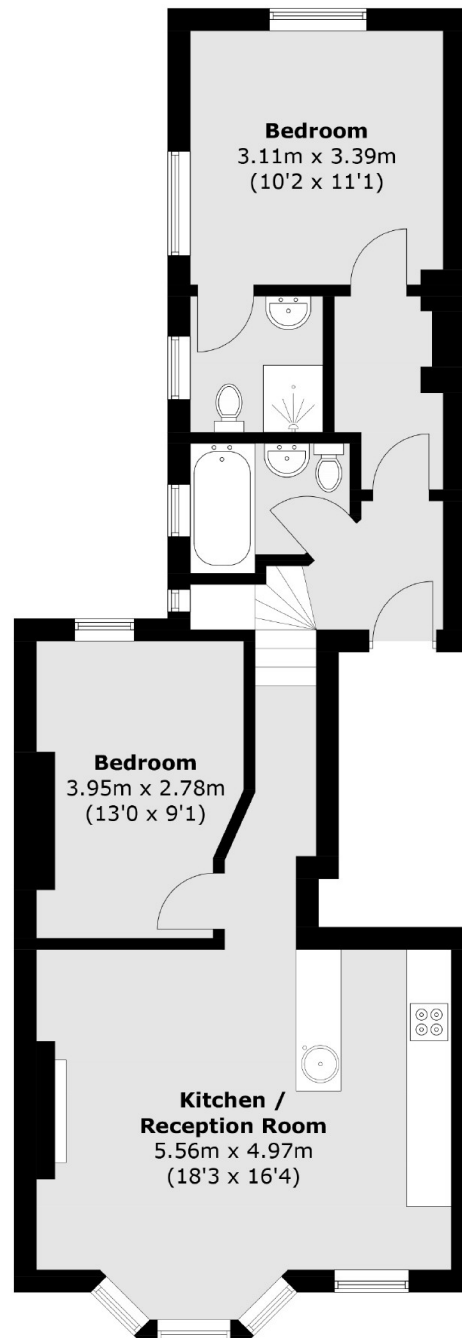
A well-presented two double bedroom, two bathroom split-level first floor flat located on this quiet, tree-lined road with the added benefit of a large, private garden.

Thorney Hedge Road is within walking distance of Gunnersbury Station (District and Overground) and the shops and restaurants of Chiswick High Road. Kew Bridge Station is also near by providing fast access to central London. Local schools, green spaces and the river are also close.

Features

- Two Double Bedrooms
- Two Bathrooms
- Split-Level
- Private Garden
- Close To Transport
- No Onward Chain

Thorney Hedge Road,
London, W4



Total area (approx.): 68.0 sq. m (731.9 sq. ft)