



Burnaby Gardens, W4
£1,795,000

Dexters



Burnaby Gardens, W4

A detached, double fronted four double bedroom family home on this popular tree lined road, with the added benefit of off-street and garage where planning has been granted a single storey conversion into additional living space.

On entry there are two well-proportioned reception rooms with traditional fireplaces and high ceilings. To the rear there is a bespoke Smallbone kitchen/breakfast room, utility room, cloakroom, as well as access into the side garage where planning has been granted a single storey conversion.

Upstairs there are four double bedrooms with vaulted, double height ceilings and three modern bathrooms with stone flooring. There is central heating and air conditioning throughout and an abundance of polished walnut wooden flooring.

There is a selection of local independent shops on the doorstep and Gunnersbury tube is within a 0.5 miles walk.

Features

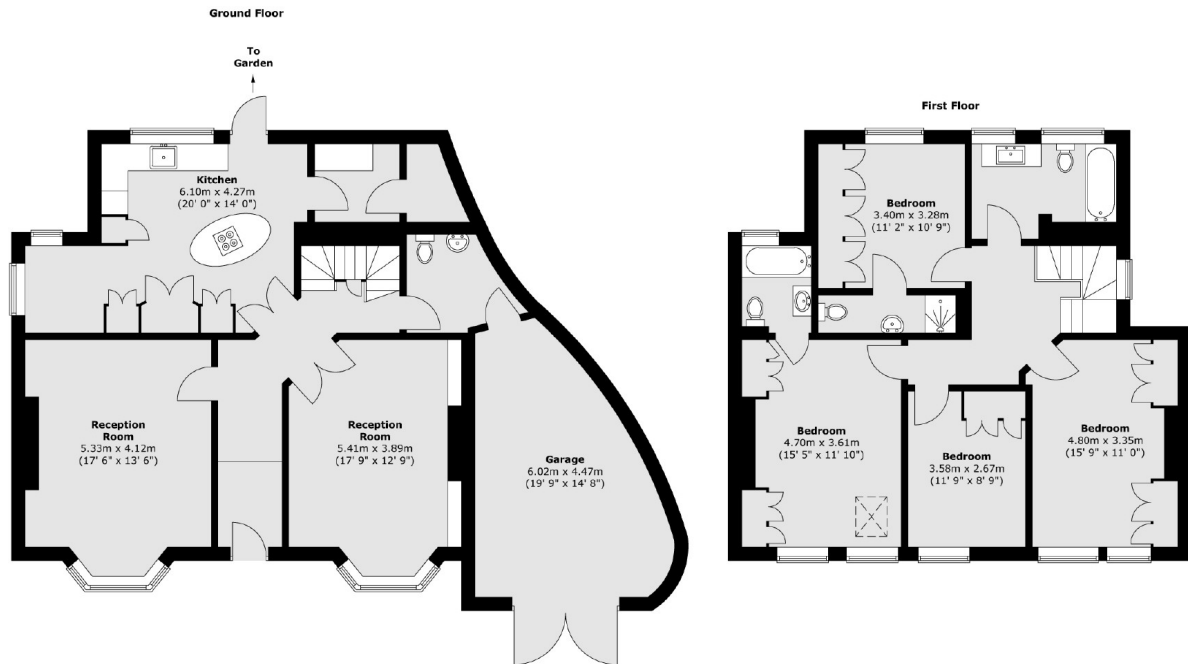
- Detached
- Four Double Bedrooms
- Three Bathrooms
- Off-Street Parking
- Garage
- Outstanding School Catchment







Burnaby Gardens, London, W4



Total area (approx.) : 194.7 sq. m (2096 sq. ft)