



Grosvenor Road, W4

£473 Per week

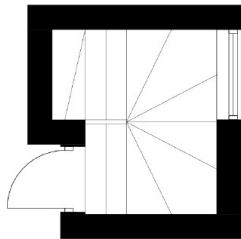
This two double bedroom apartment offers a modern kitchen, plenty of storage and a communal patio area which would be perfect for a couple or professional sharers.

Grosvenor Road is well-located for all of the amenities offered on Chiswick High Road, as well as Gunnersbury and Chiswick Park tube stations.

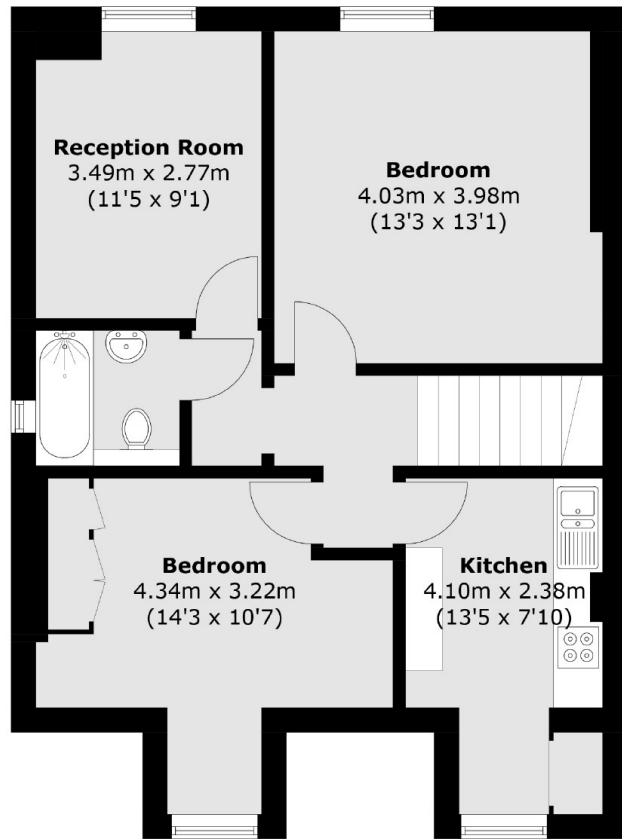
Features

- Two Double Bedrooms
- Period Conversion
- Ample Storage
- Close To Stations
- Neutral Decor
- Communal Patio Area

Grosvenor Road,
London, W4



Second Floor



Third Floor

Total area (approx.): 64.9 sq. m (698.6 sq. ft)